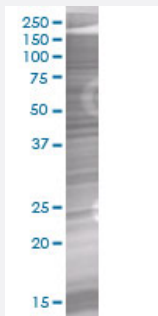


# ARL4D 293T Cell Transient Overexpression Lysate(Denatured)

Catalog # H00000379-T01

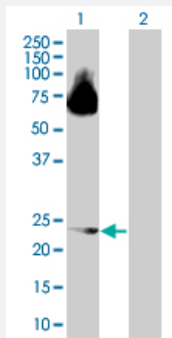
Size 100 uL

## Applications



### SDS-PAGE Gel

ARL4D transfected lysate



### Western Blot

Lane 1: ARL4D transfected lysate ( 22.2 KDa).

Lane 2: Non-transfected lysate.

## Specification

**Transfected Cell Line** 293T

**Plasmid** pCMV-ARL4D full-length

**Host** Human

**Theoretical MW (kDa)** 22.2

**Quality Control Testing** Transient overexpression cell lysate was tested with Anti-ARL4D antibody ([H00000379-B01](#)) by Western Blots.  
SDS-PAGE Gel  
ARL4D transfected lysate  
Western Blot  
Lane 1: ARL4D transfected lysate ( 22.2 KDa).  
Lane 2: Non-transfected lysate.

**Storage Buffer**

1X Sample Buffer (50 mM Tris-HCl, 2% SDS, 10% glycerol, 300 mM 2-mercaptoethanol, 0.01% Bromophenol blue)

**Storage Instruction**

Store at -80°C. Aliquot to avoid repeated freezing and thawing.

## Applications

- Western Blot

## Gene Info — ARL4D

**Entrez GeneID**[379](#)**GeneBank Accession#**[NM\\_001661](#)**Protein Accession#**[NP\\_001652](#)**Gene Name**

ARL4D

**Gene Alias**

ARF4L, ARL6

**Gene Description**

ADP-ribosylation factor-like 4D

**Omim ID**[600732](#)**Gene Ontology**[Hyperlink](#)**Gene Summary**

ADP-ribosylation factor 4D is a member of the ADP-ribosylation factor family of GTP-binding proteins. ARL4D is closely similar to ARL4A and ARL4C and each has a nuclear localization signal and an unusually high guanine nucleotide exchange rate. This protein may play a role in membrane-associated intracellular trafficking. Mutations in this gene have been associated with Bardet-Biedl syndrome (BBS). [provided by RefSeq]

**Other Designations**

ADP-ribosylation factor 4-like|ADP-ribosylation factor-like 6