

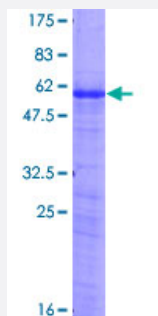
Full-Length

AREG (Human) Recombinant Protein (P01)

Catalog # H00000374-P01

Size 25 ug, 10 ug

Applications



Specification

Product Description	Human AREG full-length ORF (NP_001648.1, 1 a.a. - 252 a.a.) recombinant protein with GST-tag at N-terminal.
Sequence	MRAPLLPPAPVVLSELLGSGHYAAGLDLNDTYSGKREPFSGDHSADGFVTSRSEMSSGSEISP VSEMPSSSEPSSGADYDYSEEYDNEPQIPGYVDDSVRVEQVVKPPQNKTESENTSDKPKRKKK GGKNGKNRRNRKKKNPCNAEFQNFCHGECKYIEHLEAVTCKCQQEYFGERCGEKSMKTHSMID SSLSKIALAAIAAFMSAVILTAVAVITVQLRRQYVRKYEGEAEERKKLRQENGNVHAIA
Host	Wheat Germ (in vitro)
Theoretical MW (kDa)	54.3
Preparation Method	in vitro wheat germ expression system
Purification	Glutathione Sepharose 4 Fast Flow
Quality Control Testing	12.5% SDS-PAGE Stained with Coomassie Blue.
Storage Buffer	50 mM Tris-HCl, 10 mM reduced Glutathione, pH=8.0 in the elution buffer.
Storage Instruction	Store at -80°C. Aliquot to avoid repeated freezing and thawing.
Note	Best use within three months from the date of receipt of this protein.

Applications

- Enzyme-linked Immunoabsorbent Assay
- Western Blot (Recombinant protein)
- Antibody Production
- Protein Array

Gene Info — AREG

Entrez GeneID [374](#)

GeneBank Accession# [NM_001657.2](#)

Protein Accession# [NP_001648.1](#)

Gene Name AREG

Gene Alias AR, CRDGF, MGC13647, SDGF

Gene Description amphiregulin

Omim ID [104640](#)

Gene Ontology [Hyperlink](#)

Gene Summary The protein encoded by this gene is a member of the epidermal growth factor family. It is an autocrine growth factor as well as a mitogen for astrocytes, Schwann cells, and fibroblasts. It is related to epidermal growth factor (EGF) and transforming growth factor alpha (TGF-alpha). This protein interacts with the EGF/TGF-alpha receptor to promote the growth of normal epithelial cells and inhibits the growth of certain aggressive carcinoma cell lines. This encoded protein is associated with a psoriasis-like skin phenotype. [provided by RefSeq]

Other Designations OTTHUMP00000160473|colorectum cell-derived growth factor|schwannoma-derived growth factor

Pathway

- [ErbB signaling pathway](#)

Disease

- [Genetic Predisposition to Disease](#)
- [Ovarian Neoplasms](#)