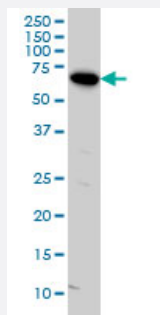


ARAF monoclonal antibody (M05), clone 3E2

Catalog # H00000369-M05

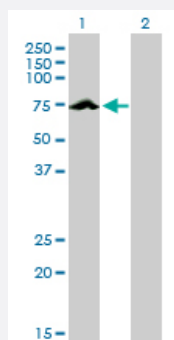
Size 100 ug

Applications



Western Blot (Cell lysate)

ARAF monoclonal antibody (M05), clone 3E2 Western Blot analysis of ARAF expression in HeLa (Cat # L013V1).

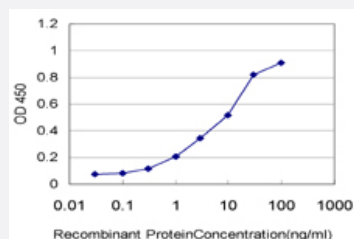


Western Blot (Transfected lysate)

Western Blot analysis of ARAF expression in transfected 293T cell line by ARAF monoclonal antibody (M05), clone 3E2.

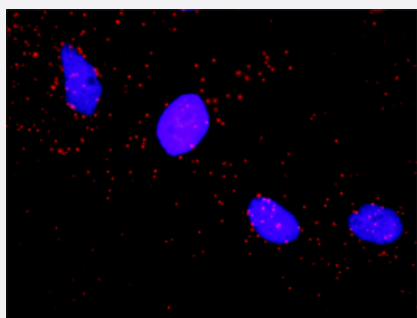
Lane 1: ARAF transfected lysate(67.6 KDa).

Lane 2: Non-transfected lysate.



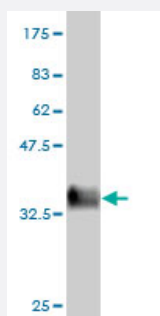
Sandwich ELISA (Recombinant protein)

Detection limit for recombinant GST tagged ARAF is approximately 0.1ng/ml as a capture antibody.



In situ Proximity Ligation Assay (Cell)

Proximity Ligation Analysis of protein-protein interactions between PKM2 and ARAF. HeLa cells were stained with anti-PKM2 rabbit purified polyclonal 1:1200 and anti-ARAF mouse monoclonal antibody 1:50. Each red dot represents the detection of protein-protein interaction complex, and nuclei were counterstained with DAPI (blue).



Western Blot detection against Immunogen (36.74 KDa) .

Specification

| | |
|--------------------------------------|---|
| Product Description | Mouse monoclonal antibody raised against a partial recombinant ARAF. |
| Immunogen | ARAF (NP_001645, 151 a.a. ~ 250 a.a) partial recombinant protein with GST tag. MW of the GST tag alone is 26 KDa. |
| Sequence | RQQFYHSVQDLSSGSRQHEAPSNRPLNELLTPQGSPRTQHCDPEHFPPAPANAPLQRIKSTS TPNVHVMVSTTAPMDSNLIQLTGQSFSTDAAGSRGGS |
| Host | Mouse |
| Reactivity | Human |
| Interspecies Antigen Sequence | Mouse (83); Rat (82) |
| Isotype | IgG2a Kappa |
| Quality Control Testing | Antibody Reactive Against Recombinant Protein. Western Blot detection against Immunogen (36.74 KDa) . |
| Storage Buffer | In 1x PBS, pH 7.4 |
| Storage Instruction | Store at -20°C or lower. Aliquot to avoid repeated freezing and thawing. |

Applications

- Western Blot (Cell lysate)

ARAF monoclonal antibody (M05), clone 3E2 Western Blot analysis of ARAF expression in HeLa (Cat # L013V1).

[Protocol Download](#)

- Western Blot (Transfected lysate)

Western Blot analysis of ARAF expression in transfected 293T cell line by ARAF monoclonal antibody (M05), clone 3E2.

Lane 1: ARAF transfected lysate(67.6 KDa).

Lane 2: Non-transfected lysate.

[Protocol Download](#)

- Western Blot (Recombinant protein)

[Protocol Download](#)

- Sandwich ELISA (Recombinant protein)

Detection limit for recombinant GST tagged ARAF is approximately 0.1ng/ml as a capture antibody.

[Protocol Download](#)

- ELISA

- In situ* Proximity Ligation Assay (Cell)

Proximity Ligation Analysis of protein-protein interactions between PKM2 and ARAF. HeLa cells were stained with anti-PKM2 rabbit purified polyclonal 1:1200 and anti-ARAF mouse monoclonal antibody 1:50. Each red dot represents the detection of protein-protein interaction complex, and nuclei were counterstained with DAPI (blue).

Gene Info — ARAF

Entrez GeneID

[369](#)

GeneBank Accession#

[NM_001654](#)

Protein Accession#

[NP_001645](#)

Gene Name

ARAF

Gene Alias

A-RAF, ARAF1, PKS2, RAFA1

| | |
|--------------------|---|
| Gene Description | v-raf murine sarcoma 3611 viral oncogene homolog |
| Omim ID | 311010 |
| Gene Ontology | Hyperlink |
| Other Designations | OTTHUMP00000023212 Oncogene ARAF1 Ras-binding protein DA-Raf v-raf murine sarcoma 3611 viral oncogene homolog 1 |

Pathway

- [Acute myeloid leukemia](#)
- [Bladder cancer](#)
- [Chronic myeloid leukemia](#)
- [Colorectal cancer](#)
- [Endometrial cancer](#)
- [ErbB signaling pathway](#)
- [Glioma](#)
- [Insulin signaling pathway](#)
- [Long-term depression](#)
- [Long-term potentiation](#)
- [Melanoma](#)
- [Natural killer cell mediated cytotoxicity](#)
- [Non-small cell lung cancer](#)
- [Pancreatic cancer](#)
- [Pathways in cancer](#)
- [Prostate cancer](#)
- [Regulation of actin cytoskeleton](#)
- [Renal cell carcinoma](#)
- [Vascular smooth muscle contraction](#)