

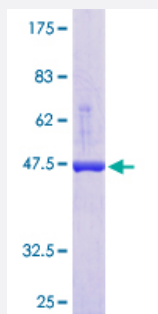
Full-Length

APRT (Human) Recombinant Protein (P01)

Catalog # H00000353-P01

Size 25 ug, 10 ug

Applications



Specification

Product Description	Human APRT full-length ORF (NP_000476.1, 1 a.a. - 180 a.a.) recombinant protein with GST-tag at N-terminal.
Sequence	MADSELQLVEQRIRSFDFPTPGVVFRDISPVLKDPASFRAAIGLLARHLKATHGGRIDYIAGLDSR GFLFGPSLAQELGLGCVLIRKRGKLPGPTLWASYSLEYGKAELEIQKDALEPGQRVVVDDLLAT GGTMNAACELLGRLQAEVLECVSLVELTSLKGREKLAPVPFFSLLQYE
Host	Wheat Germ (in vitro)
Theoretical MW (kDa)	46
Interspecies Antigen Sequence	Mouse (83); Rat (87)
Preparation Method	in vitro wheat germ expression system
Purification	Glutathione Sepharose 4 Fast Flow
Quality Control Testing	12.5% SDS-PAGE Stained with Coomassie Blue.
Storage Buffer	50 mM Tris-HCl, 10 mM reduced Glutathione, pH=8.0 in the elution buffer.
Storage Instruction	Store at -80°C. Aliquot to avoid repeated freezing and thawing.

Note

Best use within three months from the date of receipt of this protein.

Applications

- Enzyme-linked Immunoabsorbent Assay
- Western Blot (Recombinant protein)
- Antibody Production
- Protein Array

Gene Info — APRT

Entrez GeneID [353](#)

GeneBank Accession# [NM_000485.2](#)

Protein Accession# [NP_000476.1](#)

Gene Name APRT

Gene Alias AMP, DKFZp686D13177, MGC125856, MGC125857, MGC129961

Gene Description adenine phosphoribosyltransferase

Omim ID [102600](#)

Gene Ontology [Hyperlink](#)

Gene Summary Adenine phosphoribosyltransferase belongs to the purine/pyrimidine phosphoribosyltransferase family. A conserved feature of this gene is the distribution of CpG dinucleotides. This enzyme catalyzes the formation of AMP and inorganic pyrophosphate from adenine and 5-phosphoribosyl-1-pyrophosphate (PRPP). It also produces adenine as a by-product of the polyamine biosynthesis pathway. A homozygous deficiency in this enzyme causes 2,8-dihydroxyadenine urolithiasis. Two transcript variants encoding different isoforms have been found for this gene. [provided by RefSeq]

Other Designations AMP diphosphorylase|AMP pyrophosphorylase|adenine phosphoribosyltransferase, isoform a|transphosphoribosidase

Pathway

- [Metabolic pathways](#)
- [Purine metabolism](#)