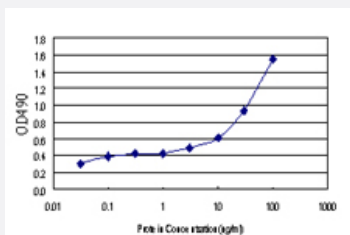


APLP2 (Human) Matched Antibody Pair

Catalog # H000003334-AP11

Size 1 Set

Applications



Sandwich ELISA detection sensitivity ranging from 1 ng/ml to 100 ng/ml.

Specification

Product Description	This antibody pair set comes with a matched antibody pair to detect and quantify the protein level of human APLP2.
Reactivity	Human
Interspecies Antigen Sequence	Mouse (95%); Rat (93%)
Quality Control Testing	Standard curve using recombinant protein (H000003334-P01) as an analyte. Sandwich ELISA detection sensitivity ranging from 1 ng/ml to 100 ng/ml.
Supplied Product	Antibody pair set content: 1. Capture antibody: rabbit MaxPab® affinity purified polyclonal anti-APLP2 (100 ug) 2. Detection antibody: mouse monoclonal anti-APLP2, IgG2b Kappa (20 ug) *Reagents are sufficient for at least 1-2 x 96 well plates using recommended protocols.
Storage Instruction	Store reagents of the antibody pair set at -20°C or lower. Please aliquot to avoid repeated freeze thaw cycle. Reagents should be returned to -20°C storage immediately after use.

Applications

- ELISA Pair (Recombinant protein)

[Protocol Download](#)

Gene Info — APLP2

Entrez GeneID	334
Gene Name	APLP2
Gene Alias	APPH, APPL2, CDEBP
Gene Description	amyloid beta (A4) precursor-like protein 2
Omim ID	104776
Gene Ontology	Hyperlink
Other Designations	amyloid precursor protein homolog HSD-2

Disease

- [Tobacco Use Disorder](#)