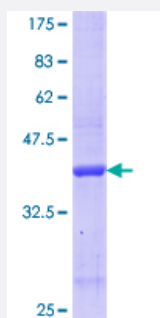


APCS (Human) Recombinant Protein (Q02)

Catalog # H00000325-Q02

Size 10 ug, 25 ug

Applications



Specification

Product Description	Human APCS partial ORF (AAH07058.1, 35 a.a. - 149 a.a.) recombinant protein with GST-tag at N-terminal.
Sequence	VTDHVNLTIPLEKPLQNFTLCFRAYSDLSRAYSLFSYNTQGRDNELLYKERVGEYSLYGRHKVTS KVIEKFPAPVHICVSWESSGIAEFWINGTPLVKKGLRQGYFVEAQP
Host	Wheat Germ (in vitro)
Theoretical MW (kDa)	38.28
Interspecies Antigen Sequence	Mouse (69); Rat (70)
Preparation Method	in vitro wheat germ expression system
Purification	Glutathione Sepharose 4 Fast Flow
Quality Control Testing	12.5% SDS-PAGE Stained with Coomassie Blue.
Storage Buffer	50 mM Tris-HCl, 10 mM reduced Glutathione, pH=8.0 in the elution buffer.
Storage Instruction	Store at -80°C. Aliquot to avoid repeated freezing and thawing.
Note	Best use within three months from the date of receipt of this protein.

Applications

- Enzyme-linked Immunoabsorbent Assay
- Western Blot (Recombinant protein)
- Antibody Production
- Protein Array

Gene Info — APCS

Entrez GeneID [325](#)

GeneBank Accession# [BC007058](#)

Protein Accession# [AAH07058.1](#)

Gene Name APCS

Gene Alias MGC88159, PTX2, SAP

Gene Description amyloid P component, serum

Omim ID [104770](#)

Gene Ontology [Hyperlink](#)

Gene Summary The protein encoded by this gene is a glycoprotein, belonging to the pentraxin family of proteins, which has a characteristic pentameric organization. These family members have considerable sequence homology which is thought to be the result of gene duplication. The binding of the encoded protein to proteins in the pathological amyloid cross-beta fold suggests its possible role as a chaperone. This protein is also thought to control the degradation of chromatin. It has been demonstrated that this protein binds to apoptotic cells at an early stage, which raises the possibility that it is involved in dealing with apoptotic cells in vivo. [provided by RefSeq]

Other Designations 9.5S alpha-1-glycoprotein|OTTHUMP00000024355|pentraxin-related|serum amyloid P component

Disease

- [Amyloid Neuropathies](#)
- [Atherosclerosis](#)

- [Calcinosis](#)
- [Coronary Artery Disease](#)
- [Genetic Predisposition to Disease](#)
- [Lupus Erythematosus](#)