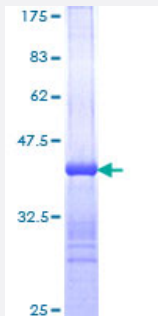


# APCS (Human) Recombinant Protein (Q01)

Catalog # H00000325-Q01

Size 25 ug, 10 ug

## Applications



## Specification

<b>Product Description</b>	Human APCS partial ORF ( NP_001630, 117 a.a. - 223 a.a.) recombinant protein with GST-tag at N-terminal.
<b>Sequence</b>	WESSSGIAEFWINGTPLVKKGLRQGYFVEAQP KIMLGQEQDSYGGKFDRSQSFVGEIGDLYMWD SVLP PENILSAYQGTPLPANILDWQALN YEIRGYVIKPLVWV
<b>Host</b>	Wheat Germ (in vitro)
<b>Theoretical MW (kDa)</b>	37.51
<b>Interspecies Antigen Sequence</b>	Mouse (68); Rat (73)
<b>Preparation Method</b>	<a href="#">in vitro wheat germ expression system</a>
<b>Purification</b>	Glutathione Sepharose 4 Fast Flow
<b>Quality Control Testing</b>	12.5% SDS-PAGE Stained with Coomassie Blue.
<b>Storage Buffer</b>	50 mM Tris-HCl, 10 mM reduced Glutathione, pH=8.0 in the elution buffer.
<b>Storage Instruction</b>	Store at -80°C. Aliquot to avoid repeated freezing and thawing.
<b>Note</b>	Best use within three months from the date of receipt of this protein.

## Applications

- Enzyme-linked Immunoabsorbent Assay
- Western Blot (Recombinant protein)
- Antibody Production
- Protein Array

## Gene Info — APCS

Entrez GeneID [325](#)

GeneBank Accession# [NM\\_001639](#)

Protein Accession# [NP\\_001630](#)

Gene Name APCS

Gene Alias MGC88159, PTX2, SAP

Gene Description amyloid P component, serum

Omim ID [104770](#)

Gene Ontology [Hyperlink](#)

**Gene Summary** The protein encoded by this gene is a glycoprotein, belonging to the pentraxin family of proteins, which has a characteristic pentameric organization. These family members have considerable sequence homology which is thought to be the result of gene duplication. The binding of the encoded protein to proteins in the pathological amyloid cross-beta fold suggests its possible role as a chaperone. This protein is also thought to control the degradation of chromatin. It has been demonstrated that this protein binds to apoptotic cells at an early stage, which raises the possibility that it is involved in dealing with apoptotic cells in vivo. [provided by RefSeq]

**Other Designations** 9.5S alpha-1-glycoprotein|OTTHUMP00000024355|pentraxin-related|serum amyloid P component

## Disease

- [Amyloid Neuropathies](#)
- [Atherosclerosis](#)

- [Calcinosis](#)
- [Coronary Artery Disease](#)
- [Genetic Predisposition to Disease](#)
- [Lupus Erythematosus](#)