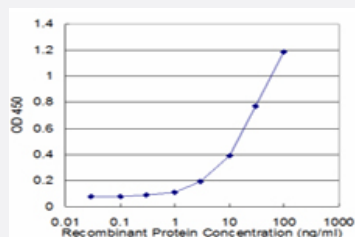


APCS monoclonal antibody (M11), clone 4F3

Catalog # H00000325-M11

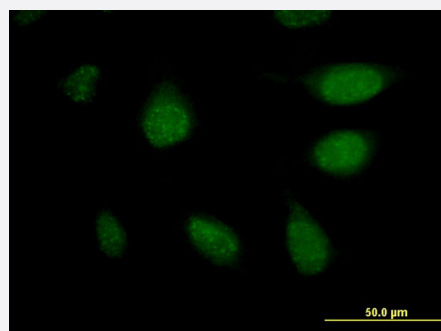
Size 100 ug

Applications



Sandwich ELISA (Recombinant protein)

Detection limit for recombinant GST tagged APCS is approximately 3ng/ml as a capture antibody.



Immunofluorescence

Immunofluorescence of monoclonal antibody to APCS on HeLa cell . [antibody concentration 20 ug/ml]



Western Blot detection against Immunogen (38.28 KDa) .

Specification

Product Description

Mouse monoclonal antibody raised against a partial recombinant APCS.

Immunogen	APCS (AAH07058.1, 35 a.a. ~ 149 a.a) partial recombinant protein with GST tag. MW of the GST tag alone is 26 KDa.
Sequence	VTDHVNLTIPLEKPLQNFTLCFRAYSDLSRAYSLFSYNTQGRDNELLVYKERVGEYSLYIGRHKVTS KVIEKFPAPVHICVSWESSGIAEFWINGTPLVKKGLRQGYFVEAQP
Host	Mouse
Reactivity	Human
Interspecies Antigen Sequence	Mouse (69); Rat (70)
Isotype	IgG2a Kappa
Quality Control Testing	Antibody Reactive Against Recombinant Protein. Western Blot detection against Immunogen (38.28 KDa) .
Storage Buffer	In 1x PBS, pH 7.4
Storage Instruction	Store at -20°C or lower. Aliquot to avoid repeated freezing and thawing.

Applications

- Western Blot (Recombinant protein)

[Protocol Download](#)

- Sandwich ELISA (Recombinant protein)

Detection limit for recombinant GST tagged APCS is approximately 3ng/ml as a capture antibody.

[Protocol Download](#)

- ELISA

- Immunofluorescence

Immunofluorescence of monoclonal antibody to APCS on HeLa cell . [antibody concentration 20 ug/ml]

Gene Info — APCS

Entrez GeneID [325](#)

GeneBank Accession# [BC007058](#)

Protein Accession#	AAH07058.1
Gene Name	APCS
Gene Alias	MGC88159, PTX2, SAP
Gene Description	amyloid P component, serum
Omim ID	104770
Gene Ontology	Hyperlink
Gene Summary	<p>The protein encoded by this gene is a glycoprotein, belonging to the pentraxin family of proteins, which has a characteristic pentameric organization. These family members have considerable sequence homology which is thought to be the result of gene duplication. The binding of the encoded protein to proteins in the pathological amyloid cross-beta fold suggests its possible role as a chaperone. This protein is also thought to control the degradation of chromatin. It has been demonstrated that this protein binds to apoptotic cells at an early stage, which raises the possibility that it is involved in dealing with apoptotic cells in vivo. [provided by RefSeq]</p>
Other Designations	9.5S alpha-1-glycoprotein OTTHUMP00000024355 pentraxin-related serum amyloid P component

Disease

- [Amyloid Neuropathies](#)
- [Atherosclerosis](#)
- [Calcinosis](#)
- [Coronary Artery Disease](#)
- [Genetic Predisposition to Disease](#)
- [Lupus Erythematosus](#)