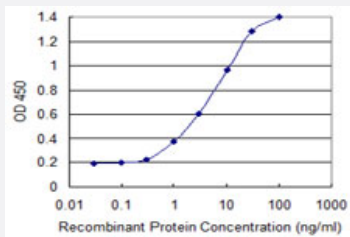


# APCS monoclonal antibody (M07), clone 4E8

Catalog # H00000325-M07

Size 100 ug

## Applications



### Sandwich ELISA (Recombinant protein)

Detection limit for recombinant GST tagged APCS is 0.1 ng/ml as a capture antibody.



Western Blot detection against Immunogen (37.51 KDa) .

## Specification

Product Description	Mouse monoclonal antibody raised against a partial recombinant APCS.
Immunogen	APCS (NP_001630, 117 a.a. ~ 223 a.a) partial recombinant protein with GST tag. MW of the GST tag alone is 26 KDa.
Sequence	WESSSGIAEFWINGTPLVKKGLRQGYFVEAQPKIVLGQEQDSYGGKFDRSQSFVGEIGDLYMWD SVLPPENILSAYQGTPLPANILDWQALNYEIRGYVIKPLVWV
Host	Mouse
Reactivity	Human

Interspecies Antigen Sequence	Mouse (68); Rat (73)
Isotype	IgG2b Kappa
Quality Control Testing	Antibody Reactive Against Recombinant Protein. Western Blot detection against Immunogen (37.51 KDa) .
Storage Buffer	In 1x PBS, pH 7.4
Storage Instruction	Store at -20°C or lower. Aliquot to avoid repeated freezing and thawing.

## Applications

- Western Blot (Recombinant protein)

[Protocol Download](#)

- Sandwich ELISA (Recombinant protein)

Detection limit for recombinant GST tagged APCS is 0.1 ng/ml as a capture antibody.

[Protocol Download](#)

- ELISA

## Gene Info — APCS

Entrez GeneID	<a href="#">325</a>
GeneBank Accession#	<a href="#">NM_001639</a>
Protein Accession#	<a href="#">NP_001630</a>
Gene Name	APCS
Gene Alias	MGC88159, PTX2, SAP
Gene Description	amyloid P component, serum
Omim ID	<a href="#">104770</a>
Gene Ontology	<a href="#">Hyperlink</a>

**Gene Summary**

The protein encoded by this gene is a glycoprotein, belonging to the pentraxin family of proteins, which has a characteristic pentameric organization. These family members have considerable sequence homology which is thought to be the result of gene duplication. The binding of the encoded protein to proteins in the pathological amyloid cross-beta fold suggests its possible role as a chaperone. This protein is also thought to control the degradation of chromatin. It has been demonstrated that this protein binds to apoptotic cells at an early stage, which raises the possibility that it is involved in dealing with apoptotic cells in vivo. [provided by RefSeq]

**Other Designations**

9.5S alpha-1-glycoprotein|OTTHUMP00000024355|pentaxin-related|serum amyloid P component

**Disease**

- [Amyloid Neuropathies](#)
- [Atherosclerosis](#)
- [Calcinosis](#)
- [Coronary Artery Disease](#)
- [Genetic Predisposition to Disease](#)
- [Lupus Erythematosus](#)