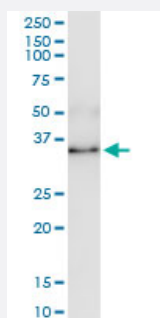


ANXA1 (Human) IP-WB Antibody Pair

Catalog # H00000301-PW1

Size 1 Set

Applications



Immunoprecipitation of ANXA1 transfected lysate using rabbit polyclonal anti-ANXA1 and Protein A Magnetic Bead ([U0007](#)), and immunoblotted with mouse purified polyclonal anti-ANXA1.

Specification

Product Description	This IP-WB antibody pair set comes with one antibody for immunoprecipitation and another to detect the precipitated protein in western blot.
Reactivity	Human
Interspecies Antigen Sequence	Mouse (87%); Rat (89%)
Quality Control Testing	Immunoprecipitation-Western Blot (IP-WB) Immunoprecipitation of ANXA1 transfected lysate using rabbit polyclonal anti-ANXA1 and Protein A Magnetic Bead (U0007), and immunoblotted with mouse purified polyclonal anti-ANXA1.
Supplied Product	Antibody pair set content: 1. Antibody pair for IP: rabbit polyclonal anti-ANXA1 (300 ul) 2. Antibody pair for WB: mouse purified polyclonal anti-ANXA1 (50 ug)
Storage Instruction	Store reagents of the antibody pair set at -20°C or lower. Please aliquot to avoid repeated freeze thaw cycle. Reagents should be returned to -20°C storage immediately after use.

Applications

- Immunoprecipitation-Western Blot

[Protocol Download](#)

Gene Info — ANXA1

Entrez GeneID [301](#)

Gene Name ANXA1

Gene Alias ANX1, LPC1

Gene Description annexin A1

Omim ID [151690](#)

Gene Ontology [Hyperlink](#)

Gene Summary Annexin I belongs to a family of Ca(2+)-dependent phospholipid binding proteins which have a molecular weight of approximately 35,000 to 40,000 and are preferentially located on the cytosolic face of the plasma membrane. Annexin I protein has an apparent relative molecular mass of 40 kDa, with phospholipase A2 inhibitory activity. Since phospholipase A2 is required for the biosynthesis of the potent mediators of inflammation, prostaglandins and leukotrienes, annexin I may have potential anti-inflammatory activity. [provided by RefSeq]

Other Designations OTTHUMP00000021474|OTTHUMP00000021475|annexin I|annexin I (lipocortin I)|lipocortin I

Disease

- [Cardiovascular Diseases](#)
- [Diabetes Mellitus](#)
- [Edema](#)