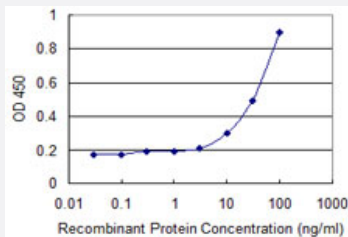


# SLC25A5 monoclonal antibody (M01), clone 1D7

Catalog # H00000292-M01

Size 100 ug

## Applications



### Sandwich ELISA (Recombinant protein)

Detection limit for recombinant GST tagged SLC25A5 is 3 ng/ml as a capture antibody.

## Specification

<b>Product Description</b>	Mouse monoclonal antibody raised against a full-length recombinant SLC25A5.
<b>Immunogen</b>	SLC25A5 (AAH56160, 1 a.a. ~ 298 a.a) full-length recombinant protein with GST tag. MW of the GST tag alone is 26 KDa.
<b>Sequence</b>	MTDAAVSFAKDFLAGGVAAAISKTA VAPIERVKLLLQVQHASKQITADKQYKGII DCVVRIPEQGV LSFWRGNLANVIRYFPTQALNFAFKDKYKQIFLGGVDKRTQFWRYFAGNLASGGAAGATSLCFVY PLDFARTRLAADVGKAGAEREFRGLGDCLVKYKSDGKGLYQGFNVSVQGIIYRAAYFGMDTAKG MLPDPKNTHIVISWMAQTVTAVAGLTSYPFDTVRRRMMMQSGRKGTDIMYGTGLDCWRKIARDEG GKAFFKGAWSNVLRGMGGAFVLVLYDEIKKYT
<b>Host</b>	Mouse
<b>Reactivity</b>	Human
<b>Interspecies Antigen Sequence</b>	Mouse (99); Rat (99)
<b>Isotype</b>	IgG2a Kappa
<b>Quality Control Testing</b>	Antibody Reactive Against Recombinant Protein.
<b>Storage Buffer</b>	In 1x PBS, pH 7.4

## Storage Instruction

Store at -20°C or lower. Aliquot to avoid repeated freezing and thawing.

## Applications

- Sandwich ELISA (Recombinant protein)

Detection limit for recombinant GST tagged SLC25A5 is 3 ng/ml as a capture antibody.

[Protocol Download](#)

- ELISA

## Gene Info — SLC25A5

**Entrez GeneID** [292](#)**GeneBank Accession#** [BC056160](#)**Protein Accession#** [AAH56160](#)**Gene Name** SLC25A5**Gene Alias** 2F1, AAC2, ANT2, T2, T3**Gene Description** solute carrier family 25 (mitochondrial carrier; adenine nucleotide translocator), member 5**Omim ID** [300150](#)**Gene Ontology** [Hyperlink](#)

**Gene Summary** This gene is a member of the mitochondrial carrier subfamily of solute carrier protein genes. The product of this gene functions as a gated pore that translocates ADP from the mitochondrial matrix into the cytoplasm. The protein forms a homodimer embedded in the inner mitochondrial membrane. Suppressed expression of this gene has been shown to induce apoptosis and inhibit tumor growth. The human genome contains several non-transcribed pseudogenes of this gene

**Other Designations** OTTHUMP00000024324|adenine nucleotide translocator 2 (fibroblast)|solute carrier family 25, member 5

## Pathway

- [Calcium signaling pathway](#)