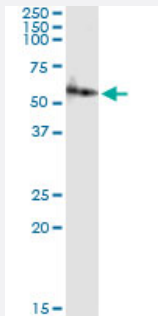


AMY2A (Human) IP-WB Antibody Pair

Catalog # H00000279-PW1

Size 1 Set

Applications



Immunoprecipitation of AMY2A transfected lysate using rabbit polyclonal anti-AMY2A and Protein A Magnetic Bead ([U0007](#)), and immunoblotted with mouse purified polyclonal anti-AMY2A.

Specification

Product Description	This IP-WB antibody pair set comes with one antibody for immunoprecipitation and another to detect the precipitated protein in western blot.
Reactivity	Human
Quality Control Testing	Immunoprecipitation-Western Blot (IP-WB) Immunoprecipitation of AMY2A transfected lysate using rabbit polyclonal anti-AMY2A and Protein A Magnetic Bead (U0007), and immunoblotted with mouse purified polyclonal anti-AMY2A.
Supplied Product	Antibody pair set content: 1. Antibody pair for IP: rabbit polyclonal anti-AMY2A (300 ul) 2. Antibody pair for WB: mouse purified polyclonal anti-AMY2A (50 ug)
Storage Instruction	Store reagents of the antibody pair set at -20°C or lower. Please aliquot to avoid repeated freeze thaw cycle. Reagents should be returned to -20°C storage immediately after use.

Applications

- Immunoprecipitation-Western Blot

[Protocol Download](#)

Gene Info — AMY2A

Entrez GeneID	279
Gene Name	AMY2A
Gene Alias	AMY2, AMY2B, PA
Gene Description	amylase, alpha 2A (pancreatic)
Omim ID	104650
Gene Ontology	Hyperlink
Gene Summary	<p>Amylases are secreted proteins that hydrolyze 1,4-alpha-glucoside bonds in oligosaccharides and polysaccharides, and thus catalyze the first step in digestion of dietary starch and glycogen. The human genome has a cluster of several amylase genes that are expressed at high levels in either salivary gland or pancreas. This gene encodes an amylase isoenzyme produced by the pancreas. [provided by RefSeq]</p>
Other Designations	1,4-alpha-D-glucan glucanohydrolase OTTHUMP00000012694 alpha-amylase amylase, pancreatic, alpha-2A found in the pancreas glycogenase pancreatic amylase 2A pancreatic amylase alpha 2A

Pathway

- [Metabolic pathways](#)
- [Starch and sucrose metabolism](#)