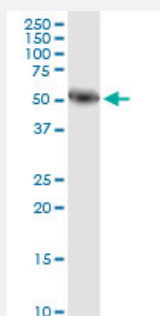


AMY1A monoclonal antibody (M04), clone 2D4

Catalog # H00000276-M04

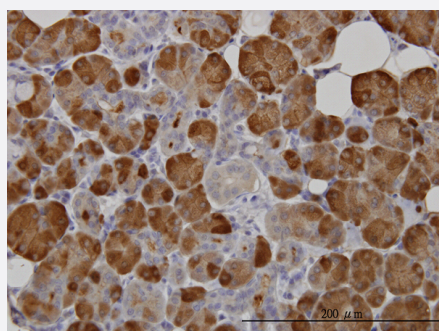
Size 100 ug

Applications



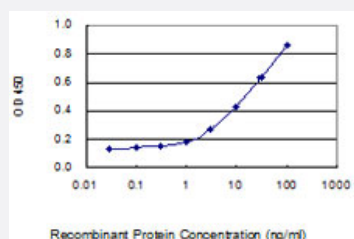
Western Blot (Tissue lysate)

AMY1A monoclonal antibody (M04), clone 2D4. Western Blot analysis of AMY1A expression in human pancreas.



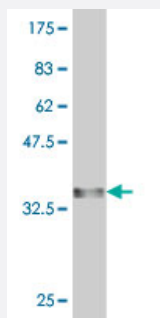
Immunohistochemistry (Formalin/PFA-fixed paraffin-embedded sections)

Immunoperoxidase of monoclonal antibody to AMY1A on formalin-fixed paraffin-embedded human salivary gland. [antibody concentration 3 ug/ml]



Sandwich ELISA (Recombinant protein)

Detection limit for recombinant GST tagged AMY1A is 0.3 ng/ml as a capture antibody.



Western Blot detection against Immunogen (33.88 KDa) .

Specification

| | |
|--------------------------------|---|
| Product Description | Mouse monoclonal antibody raised against a partial recombinant AMY1A. |
| Immunogen | AMY1A (NP_001008222, 172 a.a. ~ 245 a.a) partial recombinant protein with GST tag. MW of the GST tag alone is 26 KDa. |
| Sequence | VRDCRLSGLLDLALGKDYVRSKIAEYMNHLIDIGVAGFRIDASKHMPGDIKAILDKLHNLNSNWFP EGSKPFI |
| Host | Mouse |
| Reactivity | Human |
| Isotype | IgG2a Kappa |
| Quality Control Testing | Antibody Reactive Against Recombinant Protein. Western Blot detection against Immunogen (33.88 KDa) . |
| Storage Buffer | In 1x PBS, pH 7.4 |
| Storage Instruction | Store at -20°C or lower. Aliquot to avoid repeated freezing and thawing. |

Applications

- Western Blot (Tissue lysate)

AMY1A monoclonal antibody (M04), clone 2D4. Western Blot analysis of AMY1A expression in human pancreas.

[Protocol Download](#)

- Western Blot (Recombinant protein)

[Protocol Download](#)

- Immunohistochemistry (Formalin/PFA-fixed paraffin-embedded sections)

Immunoperoxidase of monoclonal antibody to AMY1A on formalin-fixed paraffin-embedded human salivary gland. [antibody concentration 3 ug/ml]

[Protocol Download](#)

- Sandwich ELISA (Recombinant protein)

Detection limit for recombinant GST tagged AMY1A is 0.3 ng/ml as a capture antibody.

[Protocol Download](#)

- ELISA

Gene Info — AMY1A

Entrez GeneID [276](#)

GeneBank Accession# [NM_001008221](#)

Protein Accession# [NP_001008222](#)

Gene Name AMY1A

Gene Alias AMY1, AMY1B

Gene Description amylase, alpha 1A (salivary)

Omim ID [104700](#)

Gene Ontology [Hyperlink](#)

Gene Summary Amylases are secreted proteins that hydrolyze 1,4-alpha-glucoside bonds in oligosaccharides and polysaccharides, and thus catalyze the first step in digestion of dietary starch and glycogen. The human genome has a cluster of several amylase genes that are expressed at high levels in either salivary gland or pancreas. This gene encodes an amylase isoenzyme produced by the salivary gland. Alternative splicing results in multiple transcript variants encoding the same protein. [provided by RefSeq]

Other Designations 1,4-alpha-D-glucan glucanohydrolase|OTTHUMP00000012688|alpha-amylase|amylase, salivary, alpha-1A|glycogenase|salivary amylase alpha 1A

Pathway

- [Metabolic pathways](#)

- [Starch and sucrose metabolism](#)