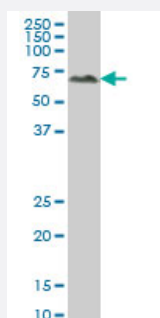


# ALPPL2 monoclonal antibody (M07), clone 2B3

Catalog # H00000251-M07

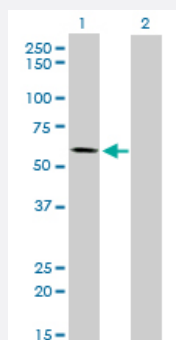
Size 100 ug

## Applications



### Western Blot (Cell lysate)

ALPPL2 monoclonal antibody (M07), clone 2B3 Western Blot analysis of ALPPL2 expression in A-431 ( Cat # L015V1 ).

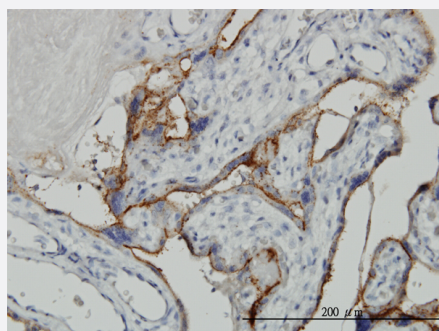


### Western Blot (Transfected lysate)

Western Blot analysis of ALPPL2 expression in transfected 293T cell line by ALPPL2 monoclonal antibody (M07), clone 2B3.

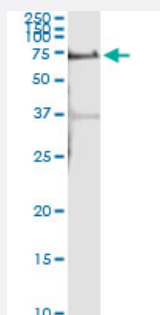
Lane 1: ALPPL2 transfected lysate(57.5 KDa).

Lane 2: Non-transfected lysate.



### Immunohistochemistry (Formalin/PFA-fixed paraffin-embedded sections)

Immunoperoxidase of monoclonal antibody to ALPPL2 on formalin-fixed paraffin-embedded human placenta. [antibody concentration 3 ug/ml]

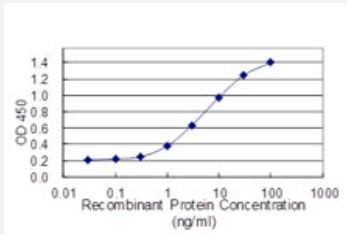


### Immunoprecipitation

Immunoprecipitation of ALPPL2 transfected lysate using anti-ALPPL2 monoclonal antibody and Protein A Magnetic Bead, and immunoblotted with ALPPL2 MaxPab rabbit polyclonal antibody.

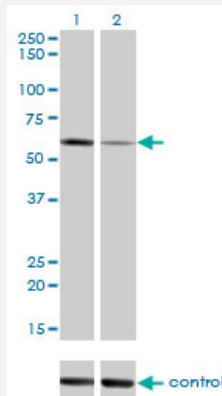
## Sandwich ELISA (Recombinant protein)

Detection limit for recombinant GST tagged ALPPL2 is 0.1 ng/ml as a capture antibody.

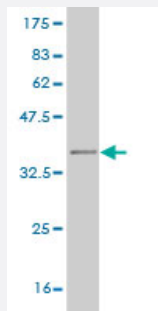


## RNAi Knockdown (Antibody validated)

Western blot analysis of ALPPL2 over-expressed 293 cell line, cotransfected with ALPPL2 Validated Chimera RNAi ( Cat # H00000251-R01V ) (Lane 2) or non-transfected control (Lane 1). Blot probed with ALPPL2 monoclonal antibody (M07), clone 2B3 (Cat # H00000251-M07 ). GAPDH ( 36.1 kDa ) used as specificity and loading control.



Western Blot detection against Immunogen (35.64 KDa) .



## Specification

<b>Product Description</b>	Mouse monoclonal antibody raised against a partial recombinant ALPPL2.
<b>Immunogen</b>	ALPPL2 (NP_112603, 365 a.a. ~ 454 a.a) partial recombinant protein with GST tag. MW of the GST tag alone is 26 KDa.
<b>Sequence</b>	SEEDTSLSLVTADHSHVFSFGGYPLRGSSIFGLAPGKARDRKAYTVLLYGNGPGYVLKDGARPDVT EESGSPPEYRQQSAVPLDGETHAGE
<b>Host</b>	Mouse
<b>Reactivity</b>	Human
<b>Interspecies Antigen Sequence</b>	Mouse (71)

Isotype	IgG2a Kappa
Quality Control Testing	Antibody Reactive Against Recombinant Protein. Western Blot detection against Immunogen (35.64 KDa) .
Storage Buffer	In 1x PBS, pH 7.4
Storage Instruction	Store at -20°C or lower. Aliquot to avoid repeated freezing and thawing.

## Applications

- Western Blot (Cell lysate)

ALPPL2 monoclonal antibody (M07), clone 2B3 Western Blot analysis of ALPPL2 expression in A-431 ( Cat # L015V1 ).

[Protocol Download](#)

- Western Blot (Transfected lysate)

Western Blot analysis of ALPPL2 expression in transfected 293T cell line by ALPPL2 monoclonal antibody (M07), clone 2B3.

Lane 1: ALPPL2 transfected lysate(57.5 KDa).

Lane 2: Non-transfected lysate.

[Protocol Download](#)

- Western Blot (Recombinant protein)

[Protocol Download](#)

- Immunohistochemistry (Formalin/PFA-fixed paraffin-embedded sections)

Immunoperoxidase of monoclonal antibody to ALPPL2 on formalin-fixed paraffin-embedded human placenta. [antibody concentration 3 ug/ml]

[Protocol Download](#)

- Immunoprecipitation

Immunoprecipitation of ALPPL2 transfected lysate using anti-ALPPL2 monoclonal antibody and Protein A Magnetic Bead, and immunoblotted with ALPPL2 MaxPab rabbit polyclonal antibody.

[Protocol Download](#)

- Sandwich ELISA (Recombinant protein)

Detection limit for recombinant GST tagged ALPPL2 is 0.1 ng/ml as a capture antibody.

[Protocol Download](#)

- ELISA
- RNAi Knockdown (Antibody validated)

Western blot analysis of ALPPL2 over-expressed 293 cell line, cotransfected with ALPPL2 Validated Chimera RNAi ( Cat # H00000251-R01V ) (Lane 2) or non-transfected control (Lane 1). Blot probed with ALPPL2 monoclonal antibody (M07), clone 2B3 (Cat # H00000251-M07 ). GAPDH ( 36.1 kDa ) used as specificity and loading control.

[Protocol Download](#)

## Gene Info — ALPPL2

Entrez GeneID [251](#)

GeneBank Accession# [NM\\_031313](#)

Protein Accession# [NP\\_112603](#)

Gene Name ALPPL2

Gene Alias ALPG, ALPPL, GCAP

Gene Description alkaline phosphatase, placental-like 2

Omim ID [171810](#)

Gene Ontology [Hyperlink](#)

**Gene Summary** There are at least four distinct but related alkaline phosphatases: intestinal, placental, placental-like, and liver/bone/kidney (tissue non-specific). The product of this gene is a membrane bound glycosylated enzyme, localized to testis, thymus and certain germ cell tumors, that is closely related to both the placental and intestinal forms of alkaline phosphatase. [provided by RefSeq]

**Other Designations** Nagao isozyme|germ cell alkaline phosphatase|placental-like alkaline phosphatase|testicular and thymus alkaline phosphatase

## Pathway

- [Folate biosynthesis](#)
- [gamma-Hexachlorocyclohexane degradation](#)
- [Metabolic pathways](#)