

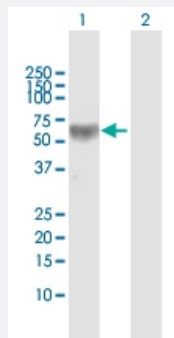
MaxPab®

ALPP MaxPab rabbit polyclonal antibody (D01)

Catalog # H00000250-D01

Size 100 uL

Applications

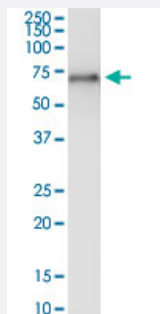


Western Blot (Transfected lysate)

Western Blot analysis of ALPP expression in transfected 293T cell line ([H00000250-T01](#)) by ALPP MaxPab polyclonal antibody.

Lane 1: ALPP transfected lysate(58 KDa).

Lane 2: Non-transfected lysate.



Immunoprecipitation

Immunoprecipitation of ALPP transfected lysate using anti-ALPP MaxPab rabbit polyclonal antibody and Protein A Magnetic Bead, and immunoblotted with ALPP purified MaxPab mouse polyclonal antibody (B01P) ([H00000250-B01P](#)).

Specification

Product Description

Rabbit polyclonal antibody raised against a full-length human ALPP protein.

Immunogen

ALPP (NP_001623.3, 1 a.a. ~ 535 a.a) full-length human protein.

Sequence	MLGPCMLLLLLLLGLRLQLSLGIIPVEEENPDFWNREAAEALGAACKLQPAQTAAKNLIIFLGDMG VSTVTAARILKGQKKDKLGPEIPLAMDRFPYVALSKTYNVDKHVPDSGATATAYLCGVKGNFQTIG LSAAARFNQCNTTRGNEVISVMNRAKKAGKSVGVTTRVQHASPAGTYAHTVNRNWYSADVP ASARQEGCQDIATQLISNMDIDVILGGGRKYMFRMGTPDPEYPDDYSQGGTRLDGKNLVQEWLAK RQGARYVWNRTELMQASLDPSVTHLMGLFEPGDMKYEIHRDSTLDP SLMEMTEAALRLLSRNPR GFFLFVEGGRIDHGHESRAYRALTETIMFDDAIERAGQLTSEEDTSLV TADHSHVFSFGGYPLR GSSIFGLAPGKARDRKAYTVLLYGNGPGYVLKDGARPDVTESESGSPEYRQQSAVPLDEETHAG EDVAVFARGPQAHLVHGVQEQTFAHVMAFAACLEPYTACDLAPPAGTTDAAHPGRSVVPALLP LLAGTLLLLLETATAP
Host	Rabbit
Reactivity	Human
Interspecies Antigen Sequence	Mouse (76); Rat (76)
Quality Control Testing	Antibody reactive against mammalian transfected lysate.
Storage Buffer	No additive
Storage Instruction	Store at -20°C or lower. Aliquot to avoid repeated freezing and thawing.

Applications

- Western Blot (Transfected lysate)

Western Blot analysis of ALPP expression in transfected 293T cell line ([H00000250-T01](#)) by ALPP MaxPab polyclonal antibody.

Lane 1: ALPP transfected lysate(58 KDa).

Lane 2: Non-transfected lysate.

[Protocol Download](#)

- Immunoprecipitation

Immunoprecipitation of ALPP transfected lysate using anti-ALPP MaxPab rabbit polyclonal antibody and Protein A Magnetic Bead, and immunoblotted with ALPP purified MaxPab mouse polyclonal antibody (B01P) ([H00000250-B01P](#)).

[Protocol Download](#)

Gene Info — ALPP

Entrez GeneID	250
GeneBank Accession#	NM_001632.3
Protein Accession#	NP_001623.3

Gene Name	ALPP
Gene Alias	ALP, FLJ61142, PALP, PLAP
Gene Description	alkaline phosphatase, placental (Regan isozyme)
Omim ID	171800
Gene Ontology	Hyperlink
Gene Summary	<p>There are at least four distinct but related alkaline phosphatases: intestinal, placental, placental-like, and liver/bone/kidney (tissue non-specific). The first three are located together on chromosome 2 while the tissue non-specific form is located on chromosome 1. The product of this gene is a membrane bound glycosylated enzyme, also referred to as the heat stable form, that is expressed primarily in the placenta although it is closely related to the intestinal form of the enzyme as well as to the placental-like form. The coding sequence for this form of alkaline phosphatase is unique in that the 3' untranslated region contains multiple copies of an Alu family repeat. In addition, this gene is polymorphic and three common alleles (type 1, type 2 and type 3) for this form of alkaline phosphatase have been well characterized. [provided by RefSeq]</p>
Other Designations	alkaline phosphomonoesterase glycerophosphatase placental alkaline phosphatase

Pathway

- [Folate biosynthesis](#)
- [gamma-Hexachlorocyclohexane degradation](#)
- [Metabolic pathways](#)

Disease

- [Birth Weight](#)
- [Fetal Death](#)