

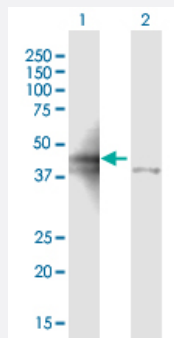
MaxPab®

ALDOA purified MaxPab mouse polyclonal antibody (B02P)

Catalog # H00000226-B02P

Size 50 ug

Applications



Western Blot (Transfected lysate)

Western Blot analysis of ALDOA expression in transfected 293T cell line ([H00000226-T03](#)) by ALDOA MaxPab polyclonal antibody.

Lane 1: ALDOA transfected lysate(39.4 KDa).

Lane 2: Non-transfected lysate.

Specification

Product Description

Mouse polyclonal antibody raised against a full-length human ALDOA protein.

Immunogen

ALDOA (NP_000025.1, 1 a.a. ~ 364 a.a) full-length human protein.

Sequence

MPYQYPALTPEQKKELSDIAHRIVAPGKGILAADESTGSIKRLQSIGTENTENRRFYRQLLLTADD
RVNPCIGGVILFHETLYQKADDGRPFQVIKSKGGVVGKVDKGVVPLAGTNGETTTQGLDGLSER
CAQYKKDGADFAKWRCVLKIGEHTPSALAIMENANVLARYASICQQNGVPIVEPEILPDGDHDLK
RCQYVTEKVLAAVYKALSDHHMLEGTLLKPNMVTTPGHACTQKFSHEEIAMATVTALRRTVPPAVT
GITFLSGGQSEEEASINLNAINKCPLLKPWALTFSYGRALQASALKAWGGKKENLKAAQEEYVKR
ALANSLACQGKYTPSGQAGAAASESLFVSNHAY

Host

Mouse

Reactivity

Human

Interspecies Antigen Sequence

Mouse (98); Rat (97)

Quality Control Testing

Antibody reactive against mammalian transfected lysate.

Storage Buffer

In 1x PBS, pH 7.4

Storage Instruction

Store at -20°C or lower. Aliquot to avoid repeated freezing and thawing.

Applications

- Western Blot (Transfected lysate)

Western Blot analysis of ALDOA expression in transfected 293T cell line ([H00000226-T03](#)) by ALDOA MaxPab polyclonal antibody.

Lane 1: ALDOA transfected lysate(39.4 KDa).

Lane 2: Non-transfected lysate.

[Protocol Download](#)

Gene Info — ALDOA

Entrez GeneID [226](#)

GeneBank Accession# [NM_000034.2](#)

Protein Accession# [NP_000025.1](#)

Gene Name ALDOA

Gene Alias ALDA, MGC10942, MGC17716, MGC17767

Gene Description aldolase A, fructose-bisphosphate

Omim ID [103850](#)

Gene Ontology [Hyperlink](#)

Gene Summary This gene product, Aldolase A (fructose-bisphosphate aldolase) is a glycolytic enzyme that catalyzes the reversible conversion of fructose-1,6-bisphosphate to glyceraldehyde 3-phosphate and dihydroxyacetone phosphate. Three aldolase isozymes (A, B, and C), encoded by three different genes, are differentially expressed during development. Aldolase A is found in the developing embryo and is produced in even greater amounts in adult muscle. Aldolase A expression is repressed in adult liver, kidney and intestine and similar to aldolase C levels in brain and other nervous tissue. Aldolase A deficiency has been associated with myopathy and hemolytic anemia. Alternative splicing of this gene results in multiple transcript variants which encode the same protein. [provided by RefSeq]

Other Designations aldolase A[fructose-1,6-bisphosphate triosephosphate-lyase]fructose-bisphosphate aldolase A

Pathway

- [Biosynthesis of alkaloids derived from histidine and purine](#)
- [Biosynthesis of alkaloids derived from ornithine](#)
- [Biosynthesis of alkaloids derived from shikimate pathway](#)
- [Biosynthesis of alkaloids derived from terpenoid and polyketide](#)
- [Biosynthesis of phenylpropanoids](#)
- [Biosynthesis of plant hormones](#)
- [Biosynthesis of terpenoids and steroids](#)
- [Carbon fixation in photosynthetic organisms](#)
- [Fructose and mannose metabolism](#)
- [Glycolysis / Gluconeogenesis](#)
- [Metabolic pathways](#)
- [Pentose phosphate pathway](#)

Disease

- [Autistic Disorder](#)
- [Genetic Predisposition to Disease](#)