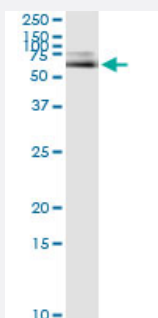


ALB (Human) IP-WB Antibody Pair

Catalog # H00000213-PW1

Size 1 Set

Applications



Immunoprecipitation of ALB transfected lysate using mouse monoclonal anti-ALB and Protein A Magnetic Bead ([U0007](#)), and immunoblotted with rabbit polyclonal anti-ALB.

Specification

Product Description	This IP-WB antibody pair set comes with one antibody for immunoprecipitation and another to detect the precipitated protein in western blot.
Reactivity	Human
Quality Control Testing	Immunoprecipitation-Western Blot (IP-WB) Immunoprecipitation of ALB transfected lysate using mouse monoclonal anti-ALB and Protein A Magnetic Bead (U0007), and immunoblotted with rabbit polyclonal anti-ALB.
Supplied Product	Antibody pair set content: 1. Antibody pair for IP: mouse monoclonal anti-ALB (300 ug) 2. Antibody pair for WB: rabbit polyclonal anti-ALB (50 ul)
Storage Instruction	Store reagents of the antibody pair set at -20°C or lower. Please aliquot to avoid repeated freeze thaw cycle. Reagents should be returned to -20°C storage immediately after use.

Applications

- Immunoprecipitation-Western Blot

[Protocol Download](#)

Gene Info — ALB

Entrez GeneID [213](#)**Gene Name** ALB**Gene Alias** DKFZp779N1935, PRO0883, PRO0903, PRO1341**Gene Description** albumin**Omim ID** [103600 194470](#)**Gene Ontology** [Hyperlink](#)

Gene Summary Albumin is a soluble, monomeric protein which comprises about one-half of the blood serum protein. Albumin functions primarily as a carrier protein for steroids, fatty acids, and thyroid hormones and plays a role in stabilizing extracellular fluid volume. Albumin is a globular unglycosylated serum protein of molecular weight 65,000. Albumin is synthesized in the liver as preproalbumin which has an N-terminal peptide that is removed before the nascent protein is released from the rough endoplasmic reticulum. The product, proalbumin, is in turn cleaved in the Golgi vesicles to produce the secreted albumin. [provided by RefSeq]

Other Designations cell growth inhibiting protein 42|growth-inhibiting protein 20|serum albumin

Disease

- [Alzheimer disease](#)
- [Diabetes Mellitus](#)
- [Hepatitis](#)