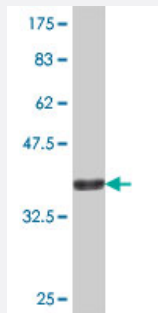


AK3L1 polyclonal antibody (A02)

Catalog # H00000205-A02

Size 50 uL

Applications



Western Blot detection against Immunogen (38.21 KDa) .

Specification

Product Description	Mouse polyclonal antibody raised against a partial recombinant AK3L1.
Immunogen	AK3L1 (NP_982289, 1 a.a. ~ 110 a.a) partial recombinant protein with GST tag.
Sequence	MASKLLRAVILGPPGSGKGTVCQRIQNFGQLHLSSGHFLRENIKASTEVGEMAKQYIEKSLLVPD HVITRLMMSELENRRGQHWLLDGFPTLGQAEALDKICEVDLVI
Host	Mouse
Reactivity	Human
Interspecies Antigen Sequence	Mouse (86); Rat (86)
Quality Control Testing	Antibody Reactive Against Recombinant Protein. Western Blot detection against Immunogen (38.21 KDa) .
Storage Buffer	50 % glycerol
Storage Instruction	Store at -20°C or lower. Aliquot to avoid repeated freezing and thawing.

Applications

- Western Blot (Recombinant protein)

[Protocol Download](#)

- ELISA

Gene Info — AK3L1

Entrez GeneID [205](#)

GeneBank Accession# [NM_203464](#)

Protein Accession# [NP_982289](#)

Gene Name AK3L1

Gene Alias AK3, AK4, MGC166959

Gene Description adenylate kinase 3-like 1

Omim ID [103030](#)

Gene Ontology [Hyperlink](#)

Gene Summary This gene encodes a member of the adenylate kinase family of enzymes. The encoded protein is localized to the mitochondrial matrix. Adenylate kinases regulate the adenine and guanine nucleotide compositions within a cell by catalyzing the reversible transfer of phosphate group among these nucleotides. Five isozymes of adenylate kinase have been identified in vertebrates. Expression of these isozymes is tissue-specific and developmentally regulated. A pseudogene for this gene has been located on chromosome 17. Three transcript variants encoding the same protein have been identified for this gene. Sequence alignment suggests that the gene defined by NM_013410, NM_203464, and NM_001005353 is located on chromosome 1. [provided by RefSeq]

Other Designations ATP-AMP transphosphorylase|GTP:AMP phosphotransferase|OTTHUMP00000010594|mitochondrial adenylate kinase-3|nucleoside-triphosphate-adenylate kinase

Pathway

- [Metabolic pathways](#)
- [Purine metabolism](#)

Disease

- [Tobacco Use Disorder](#)