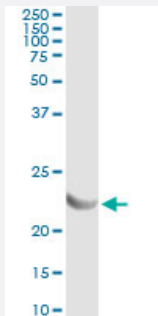


# AK1 (Human) IP-WB Antibody Pair

Catalog # H00000203-PW1

Size 1 Set

## Applications



Immunoprecipitation of AK1 transfected lysate using mouse monoclonal anti-AK1 and Protein A Magnetic Bead ([U0007](#)), and immunoblotted with rabbit polyclonal anti-AK1.

## Specification

<b>Product Description</b>	This IP-WB antibody pair set comes with one antibody for immunoprecipitation and another to detect the precipitated protein in western blot.
<b>Reactivity</b>	Human
<b>Quality Control Testing</b>	Immunoprecipitation-Western Blot (IP-WB) Immunoprecipitation of AK1 transfected lysate using mouse monoclonal anti-AK1 and Protein A Magnetic Bead ( <a href="#">U0007</a> ), and immunoblotted with rabbit polyclonal anti-AK1.
<b>Supplied Product</b>	Antibody pair set content: 1. Antibody pair for IP: mouse monoclonal anti-AK1 (300 ug) 2. Antibody pair for WB: rabbit polyclonal anti-AK1 (50 ul)
<b>Storage Instruction</b>	Store reagents of the antibody pair set at -20°C or lower. Please aliquot to avoid repeated freeze thaw cycle. Reagents should be returned to -20°C storage immediately after use.

## Applications

- Immunoprecipitation-Western Blot

[Protocol Download](#)

## Gene Info — AK1

**Entrez GeneID** [203](#)**Gene Name** AK1**Gene Alias** -**Gene Description** adenylate kinase 1**Omim ID** [103000](#)**Gene Ontology** [Hyperlink](#)

**Gene Summary** Adenylate kinase is an enzyme involved in regulating the adenine nucleotide composition within a cell by catalyzing the reversible transfer of phosphate group among adinine nucleotides. Three isozymes of adenylate kinase have been identified in vertebrates, adenylate isozyme 1 (AK1), 2 (AK2) and 3 (AK3). AK1 is found in the cytosol of skeletal muscle, brain and erythrocytes, whereas AK2 and AK3 are found in the mitochondria of other tissues including liver and heart. AK1 was identified because of its association with a rare genetic disorder causing nonspherocytic hemolytic anemia where a mutation in the AK1 gene was found to reduce the catalytic activity of the enzyme. [provided by RefSeq]

**Other Designations** ATP-AMP transphosphorylase|OTTHUMP00000022217|OTTHUMP00000022218|myokinase

## Pathway

- [Metabolic pathways](#)
- [Purine metabolism](#)

## Disease

- [Fetal Growth Retardation](#)