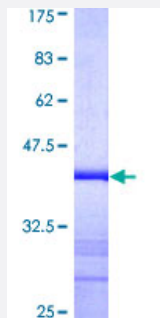


AFP (Human) Recombinant Protein (Q01)

Catalog # H00000174-Q01

Size 25 ug, 10 ug

Applications



Specification

Product Description	Human AFP partial ORF (AAH27881, 500 a.a. - 609 a.a.) recombinant protein with GST-tag at N-terminal.
Sequence	CCTSSYANRRPCFSSLVDETYVPPAFSDDKFIFHKDLCQAQGVALQTMKQEFLINLVKQKPQITE EQLEAVIADFSGLLEKCCQGQEQEVCFAEEGQKLISKTRAALGV
Host	Wheat Germ (in vitro)
Theoretical MW (kDa)	37.84
Interspecies Antigen Sequence	Mouse (79); Rat (78)
Preparation Method	in vitro wheat germ expression system
Purification	Glutathione Sepharose 4 Fast Flow
Quality Control Testing	12.5% SDS-PAGE Stained with Coomassie Blue.
Storage Buffer	50 mM Tris-HCl, 10 mM reduced Glutathione, pH=8.0 in the elution buffer.
Storage Instruction	Store at -80°C. Aliquot to avoid repeated freezing and thawing.
Note	Best use within three months from the date of receipt of this protein.

Applications

- Enzyme-linked Immunoabsorbent Assay
- Western Blot (Recombinant protein)
- Antibody Production
- Protein Array

Gene Info — AFP

Entrez GeneID [174](#)

GeneBank Accession# [BC027881](#)

Protein Accession# [AAH27881](#)

Gene Name AFP

Gene Alias FETA, HPAFP

Gene Description alpha-fetoprotein

Omim ID [104150](#)

Gene Ontology [Hyperlink](#)

Gene Summary This gene encodes alpha-fetoprotein, a major plasma protein produced by the yolk sac and the liver during fetal life. Alpha-fetoprotein expression in adults is often associated with hepatoma or teratoma. However, hereditary persistence of alpha-fetoprotein may also be found in individuals with no obvious pathology. The protein is thought to be the fetal counterpart of serum albumin, and the alpha-fetoprotein and albumin genes are present in tandem in the same transcriptional orientation on chromosome 4. Alpha-fetoprotein is found in monomeric as well as dimeric and trimeric forms, and binds copper, nickel, fatty acids and bilirubin. The level of alpha-fetoprotein in amniotic fluid is used to measure renal loss of protein to screen for spina bifida and anencephaly. [provided by RefSeq]

Other Designations OTTHUMP00000160480|alpha-1-fetoprotein|alpha-fetoglobulin

Publication Reference

- [Magnetofluorescent nanocomposites and quantum dots used for optimal application in magnetic fluorescence-linked immunoassay.](#)

Tsai HY, Li SY, Fuh CB.

Analytical and Bioanalytical Chemistry 2018 Mar; 410(7):1923.

Application: ELISA, Serum samples

- [Multifunctional Nanoparticles for Protein Detections in Thin Channels.](#)

Hweiyen Tsai, Weimin Lin, Mingchieh Chuang, Yishuan Lu, C Bor Fuh.

Biosensors & Bioelectronics 2017 Apr; 90:153.

Application: ELISA, Human, Human serum, Recombinant protein

Disease

- [Carcinoma](#)
- [Liver Cirrhosis](#)
- [Liver Neoplasms](#)