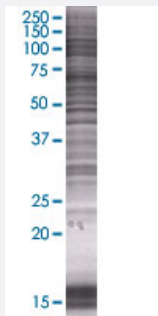


AFM 293T Cell Transient Overexpression Lysate(Denatured)

Catalog # H00000173-T01

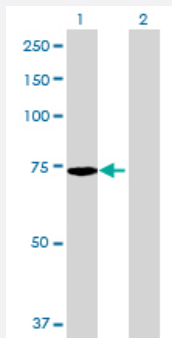
Size 100 uL

Applications



SDS-PAGE Gel

AFM transfected lysate.



Western Blot

Lane 1: AFM transfected lysate (66 KDa)

Lane 2: Non-transfected lysate.

Specification

Transfected Cell Line	293T
Plasmid	pCMV-AFM full-length
Host	Human
Theoretical MW (kDa)	66
Interspecies Antigen Sequence	Mouse (68); Rat (68)

Quality Control Testing

Transient overexpression cell lysate was tested with Anti-AFM antibody ([H00000173-B01](#)) by Western Blots.
SDS-PAGE Gel
AFM transfected lysate.
Western Blot
Lane 1: AFM transfected lysate (66 KDa)
Lane 2: Non-transfected lysate.

Storage Buffer

1X Sample Buffer (50 mM Tris-HCl, 2% SDS, 10% glycerol, 300 mM 2-mercaptoethanol, 0.01% Bromophenol blue)

Storage Instruction

Store at -80°C. Aliquot to avoid repeated freezing and thawing.

Applications

- Western Blot

Gene Info — AFM

Entrez GeneID[173](#)**GeneBank Accession#**[NM_001133.2](#)**Protein Accession#**[NP_001124.1](#)**Gene Name**

AFM

Gene Alias

ALB2, ALBA, ALF, MGC125338, MGC125339

Gene Description

afamin

Omim ID[104145](#)**Gene Ontology**[Hyperlink](#)**Gene Summary**

This gene is a member of the albumin gene family, which is comprised of four genes that localize to chromosome 4 in a tandem arrangement. These four genes encode structurally-related serum transport proteins that are known to be evolutionarily related. The protein encoded by this gene is regulated developmentally, expressed in the liver and secreted into the bloodstream. [provided by RefSeq]

Other Designations

alpha-albumin