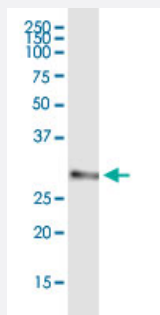


AES (Human) IP-WB Antibody Pair

Catalog # H00000166-PW2

Size 1 Set

Applications



Immunoprecipitation of AES transfected lysate using rabbit polyclonal anti-AES and Protein A Magnetic Bead ([U0007](#)), and immunoblotted with mouse purified polyclonal anti-AES.

Specification

Product Description	This IP-WB antibody pair set comes with one antibody for immunoprecipitation and another to detect the precipitated protein in western blot.
Reactivity	Human
Quality Control Testing	Immunoprecipitation-Western Blot (IP-WB) Immunoprecipitation of AES transfected lysate using rabbit polyclonal anti-AES and Protein A Magnetic Bead (U0007), and immunoblotted with mouse purified polyclonal anti-AES.
Supplied Product	Antibody pair set content: 1. Antibody pair for IP: rabbit polyclonal anti-AES (300 ul) 2. Antibody pair for WB: mouse purified polyclonal anti-AES (50 ug)
Storage Instruction	Store reagents of the antibody pair set at -20°C or lower. Please aliquot to avoid repeated freeze thaw cycle. Reagents should be returned to -20°C storage immediately after use.

Applications

- Immunoprecipitation-Western Blot

[Protocol Download](#)

Gene Info — AES

Entrez GeneID	166
---------------	---------------------

Gene Name	AES
-----------	-----

Gene Alias	AES-1, AES-2, ESP1, GRG, GRG5, TLE5
------------	-------------------------------------

Gene Description	amino-terminal enhancer of split
------------------	----------------------------------

Omim ID	600188
---------	------------------------

Gene Ontology	Hyperlink
---------------	---------------------------

Gene Summary	<p>The protein encoded by this gene is similar in sequence to the amino terminus of Drosophila enhancer of split groucho, a protein involved in neurogenesis during embryonic development. The encoded protein, which belongs to the groucho/TLE family of proteins, can function as a homooligomer or as a heterooligomer with other family members to dominantly repress the expression of other family member genes. Three transcript variants encoding different isoforms have been found for this gene. [provided by RefSeq]</p>
--------------	---

Other Designations	-
--------------------	---