

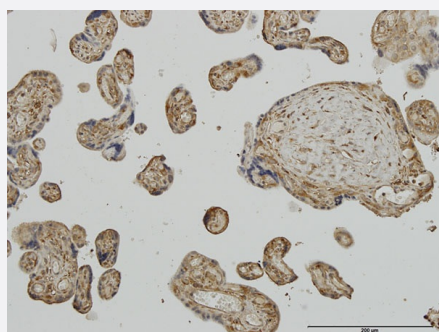
CX Grade

AP2B1 monoclonal antibody (M01J), clone 2D5

Catalog # H00000163-M01J

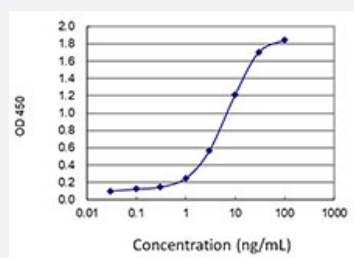
Size 100 ug

Applications



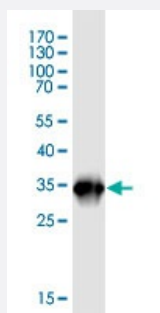
Immunohistochemistry (Formalin/PFA-fixed paraffin-embedded sections)

Immunoperoxidase of monoclonal antibody to AP2B1 on formalin-fixed paraffin-embedded human placenta. [antibody concentration 3 ug/ml]



Sandwich ELISA (Recombinant protein)

Detection limit for recombinant GST tagged AP2B1 is 0.03 ng/ml as a capture antibody.



Western Blot detection against Immunogen (33.11 KDa) .

Specification

Product Description

Mouse monoclonal antibody raised against a partial recombinant AP2B1. This product is belong to Cell Culture Grade Antibody (CX Grade).

Immunogen	AP2B1 (NP_001273.1, 585 a.a. ~ 651 a.a) partial recombinant protein with GST tag. MW of the GST tag alone is 26 KDa.
Sequence	SHGIHRKHLPIHHGSTDAGDSPVGTATTATNLEQPQVIPSQGDLLGDLLNLDLGPPVNVVPQVSSMQMG
Host	Mouse
Reactivity	Human
Preparation Method	Cell Culture Production
Isotype	IgG1 Kappa
Quality Control Testing	Antibody Reactive Against Recombinant Protein. Western Blot detection against Immunogen (33.11 KDa) .
Storage Buffer	In 1x PBS, pH 7.4
Storage Instruction	Store at -20°C or lower. Aliquot to avoid repeated freezing and thawing.

Applications

- Western Blot (Recombinant protein)

[Protocol Download](#)

- Immunohistochemistry (Formalin/PFA-fixed paraffin-embedded sections)

Immunoperoxidase of monoclonal antibody to AP2B1 on formalin-fixed paraffin-embedded human placenta. [antibody concentration 3 ug/ml]

[Protocol Download](#)

- Sandwich ELISA (Recombinant protein)

Detection limit for recombinant GST tagged AP2B1 is 0.03 ng/ml as a capture antibody.

[Protocol Download](#)

- ELISA

Gene Info — AP2B1

Entrez GeneID

[163](#)

GeneBank Accession#	NM_001282
Protein Accession#	NP_001273.1
Gene Name	AP2B1
Gene Alias	ADTB2, AP105B, AP2-BETA, CLAPB1, DKFZp781K0743
Gene Description	adaptor-related protein complex 2, beta 1 subunit
Omim ID	601025
Gene Ontology	Hyperlink
Gene Summary	The protein encoded by this gene is one of two large chain components of the assembly protein complex 2, which serves to link clathrin to receptors in coated vesicles. The encoded protein is found on the cytoplasmic face of coated vesicles in the plasma membrane. Two transcript variants encoding different isoforms have been found for this gene. [provided by RefSeq]
Other Designations	adaptin, beta 2 (beta) clathrin assembly protein complex 2 beta large chain clathrin-associated/assembly/adaptor protein, large, beta 1 plasma membrane adaptor HA2/AP2 adaptin beta subunit

Pathway

- [Endocytosis](#)