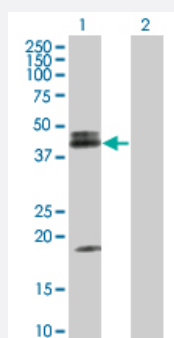


ADORA2A 293T Cell Transient Overexpression Lysate(Denatured)

Catalog # H00000135-T01

Size 100 uL

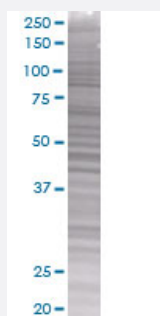
Applications



Western Blot

Lane 1: ADORA2A transfected lysate (44.7 kDa)

Lane 2: Non-transfected lysate.



SDS-PAGE Gel

ADORA2A transfected lysate.

Specification

Transfected Cell Line	293T
Plasmid	pCMV-ADORA2A full-length
Host	Human
Theoretical MW (kDa)	45.43
Interspecies Antigen Sequence	Mouse (83); Rat (83)

Quality Control Testing	<p>Transient overexpression cell lysate was tested with Anti-ADORA2A antibody (H00000135-B02) by Western Blots.</p> <p>Western Blot</p> <p>Lane 1: ADORA2A transfected lysate (44.7 KDa)</p> <p>Lane 2: Non-transfected lysate.</p> <p>SDS-PAGE Gel</p> <p>ADORA2A transfected lysate.</p>
Storage Buffer	1X Sample Buffer (50 mM Tris-HCl, 2% SDS, 10% glycerol, 300 mM 2-mercaptoethanol, 0.01% Bromophenol blue)
Storage Instruction	Store at -80°C. Aliquot to avoid repeated freezing and thawing.

Applications

- Western Blot

Gene Info — ADORA2A

Entrez GeneID	135
GeneBank Accession#	NM_000675
Protein Accession#	NP_000666
Gene Name	ADORA2A
Gene Alias	ADORA2, RDC8, hA2aR
Gene Description	adenosine A2a receptor
Omim ID	102776
Gene Ontology	Hyperlink
Gene Summary	This gene encodes a protein which is one of several receptor subtypes for adenosine. The activity of the encoded protein, a G-protein coupled receptor family member, is mediated by G proteins which activate adenylyl cyclase. The encoded protein is abundant in basal ganglia, vasculature and platelets and it is a major target of caffeine. [provided by RefSeq]
Other Designations	adenosine A2 receptor adenosine receptor subtype A2a

Pathway

- [Calcium signaling pathway](#)
- [Neuroactive ligand-receptor interaction](#)
- [Vascular smooth muscle contraction](#)

Disease

- [Amphetamine-Related Disorders](#)
- [Anorexia Nervosa](#)
- [Anxiety Disorders](#)
- [Arousal](#)
- [Arthritis](#)
- [Asthma](#)
- [Atherosclerosis](#)
- [Autistic Disorder](#)
- [Bulimia](#)
- [Calcinosis](#)
- [Cardiovascular Diseases](#)
- [Cognition](#)
- [Coronary Artery Disease](#)
- [Depressive Disorder](#)
- [Diabetes Mellitus](#)
- [Drug Hypersensitivity](#)
- [Drug Toxicity](#)
- [Edema](#)
- [Fatigue](#)
- [Genetic Predisposition to Disease](#)
- [Headache](#)

- [Huntington disease](#)
- [Hypertension](#)
- [Mental Disorders](#)
- [Migraine with Aura](#)
- [Mood Disorders](#)
- [Neuropsychological Tests](#)
- [Panic Disorder](#)
- [Parkinson disease](#)
- [Personality Inventory](#)
- [Psychiatric Status Rating Scales](#)
- [Psychomotor Performance](#)
- [Psychoses](#)
- [Reaction Time](#)
- [Schizophrenia](#)
- [Schizophrenic Psychology](#)
- [Sleep](#)
- [Sleep Disorders](#)
- [Sleep Initiation and Maintenance Disorders](#)
- [Substance Withdrawal Syndrome](#)
- [Substance-Related Disorders](#)
- [Syncope](#)
- [Weight Gain](#)