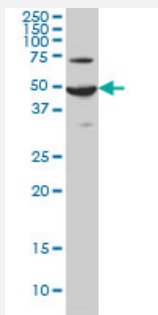


ADCYAP1R1 monoclonal antibody (M01), clone 2B12

Catalog # H00000117-M01

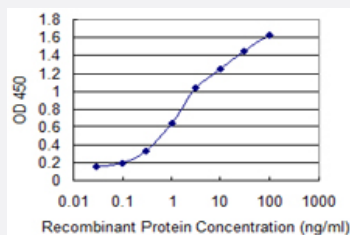
Size 100 ug

Applications



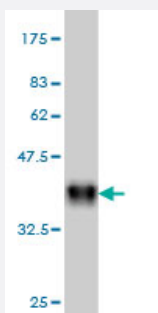
Western Blot (Cell lysate)

ADCYAP1R1 monoclonal antibody (M01), clone 2B12 Western Blot analysis of ADCYAP1R1 expression in HeLa (Cat # L013V1).



Sandwich ELISA (Recombinant protein)

Detection limit for recombinant GST tagged ADCYAP1R1 is 0.03 ng/ml as a capture antibody.



Western Blot detection against Immunogen (36.74 KDa) .

Specification

Product Description

Mouse monoclonal antibody raised against a partial recombinant ADCYAP1R1.

Immunogen	ADCYAP1R1 (NP_001109, 21 a.a. ~ 120 a.a) partial recombinant protein with GST tag. MW of the GST tag alone is 26 KDa.
Sequence	MHSDCIFKKEQAMCLEKIQRANELMGFNDSSPGCPGMWDNITCWKPAHV GEMVLVSCPELFRIF NPDQVWETETIGESDFGDSNSLDLSDMGVVSRNCTE
Host	Mouse
Reactivity	Human
Interspecies Antigen Sequence	Mouse (85); Rat (86)
Isotype	IgG1 Kappa
Quality Control Testing	Antibody Reactive Against Recombinant Protein. Western Blot detection against Immunogen (36.74 KDa) .
Storage Buffer	In 1x PBS, pH 7.4
Storage Instruction	Store at -20°C or lower. Aliquot to avoid repeated freezing and thawing.

Applications

- Western Blot (Cell lysate)

ADCYAP1R1 monoclonal antibody (M01), clone 2B12 Western Blot analysis of ADCYAP1R1 expression in HeLa (Cat # L013V1).

[Protocol Download](#)

- Western Blot (Recombinant protein)

[Protocol Download](#)

- Sandwich ELISA (Recombinant protein)

Detection limit for recombinant GST tagged ADCYAP1R1 is 0.03 ng/ml as a capture antibody.

[Protocol Download](#)

- ELISA

Gene Info — ADCYAP1R1

Entrez GeneID

[117](#)

GeneBank Accession#	NM_001118
Protein Accession#	NP_001109
Gene Name	ADCYAP1R1
Gene Alias	PAC1, PACAPR, PACAPRI
Gene Description	adenylate cyclase activating polypeptide 1 (pituitary) receptor type I
Omim ID	102981
Gene Ontology	Hyperlink
Gene Summary	<p>This gene encodes type I adenylate cyclase activating polypeptide receptor, which is a membrane-associated protein and shares significant homology with members of the glucagon/secretin receptor family. This receptor mediates diverse biological actions of adenylate cyclase activating polypeptide 1 and is positively coupled to adenylate cyclase. Alternative splicing of two exons of this gene generates four major splice variants, but their full-length nature has not been determined. [provided by RefSeq]</p>
Other Designations	OTTHUMP00000025502 OTTHUMP00000123435 adenylate cyclase activating polypeptide 1 (pituitary) receptor type 1 pituitary adenylate cyclase activating polypeptide 1 receptor type I Hiphop

Pathway

- [Neuroactive ligand-receptor interaction](#)

Disease

- [Asthma](#)
- [Genetic Predisposition to Disease](#)
- [Mental Disorders](#)