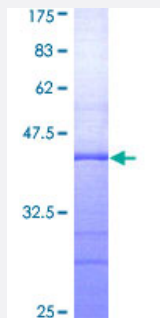


ADARB1 (Human) Recombinant Protein (Q01)

Catalog # H00000104-Q01

Size 25 ug, 10 ug

Applications



Specification

Product Description	Human ADARB1 partial ORF (AAH65545, 592 a.a. - 701 a.a.) recombinant protein with GST-tag at N-terminal.
Sequence	PGKAPNFSVNWTVGDSAIEVINATTGKDELGRASRLCKHALYCRWMRVHGKVPShLLRSKITKPN VYHESKLAAKEYQAAKARLFTAFIKAGLGAWVEKPTEQDQFSLTP
Host	Wheat Germ (in vitro)
Theoretical MW (kDa)	37.84
Interspecies Antigen Sequence	Mouse (92); Rat (94)
Preparation Method	in vitro wheat germ expression system
Purification	Glutathione Sepharose 4 Fast Flow
Quality Control Testing	12.5% SDS-PAGE Stained with Coomassie Blue.
Storage Buffer	50 mM Tris-HCl, 10 mM reduced Glutathione, pH=8.0 in the elution buffer.
Storage Instruction	Store at -80°C. Aliquot to avoid repeated freezing and thawing.
Note	Best use within three months from the date of receipt of this protein.

Applications

- Enzyme-linked Immunoabsorbent Assay
- Western Blot (Recombinant protein)
- Antibody Production
- Protein Array

Gene Info — ADARB1

Entrez GeneID	104
GeneBank Accession#	BC065545
Protein Accession#	AAH65545
Gene Name	ADARB1
Gene Alias	ADAR2, ADAR2a, ADAR2a-L1, ADAR2a-L2, ADAR2a-L3, ADAR2b, ADAR2c, ADAR2d, ADAR2g, DRABA2, DRADA2, RED1
Gene Description	adenosine deaminase, RNA-specific, B1 (RED1 homolog rat)
Omim ID	601218
Gene Ontology	Hyperlink
Gene Summary	This gene encodes the enzyme responsible for pre-mRNA editing of the glutamate receptor subunit B by site-specific deamination of adenosines. Studies in rat found that this enzyme acted on its own pre-mRNA molecules to convert an AA dinucleotide to an AI dinucleotide which resulted in a new splice site. Alternative splicing of this gene results in several transcript variants, some of which have been characterized by the presence or absence of an ALU cassette insert and a short or long C-terminal region. [provided by RefSeq]
Other Designations	ADAR2c ADAR2d OTTHUMP00000115341 OTTHUMP00000115342 RNA editase RNA editing deaminase 1 RNA-specific adenosine deaminase B1 adenosine deaminase acting on RNA type 2a adenosine deaminase acting on RNA type2d adenosine deaminase acting on RNA type2g adenosin

Disease

- [Tobacco Use Disorder](#)