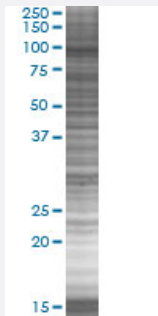


ACTN1 293T Cell Transient Overexpression Lysate(Denatured)

Catalog # H00000087-T01

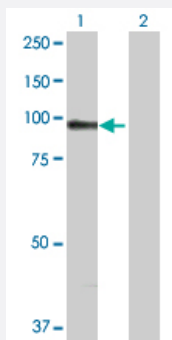
Size 100 uL

Applications



SDS-PAGE Gel

ACTN1 transfected lysate.



Western Blot

Lane 1: ACTN1 transfected lysate (103.10 KDa)

Lane 2: Non-transfected lysate.

Specification

Transfected Cell Line	293T
Plasmid	pCMV-ACTN1 full-length
Host	Human
Theoretical MW (kDa)	103.1
Interspecies Antigen Sequence	Mouse (99); Rat (99)

Quality Control Testing

Transient overexpression cell lysate was tested with Anti-ACTN1 antibody ([H00000087-D01P](#)) by Western Blots.
SDS-PAGE Gel
ACTN1 transfected lysate.
Western Blot
Lane 1: ACTN1 transfected lysate (103.10 KDa)
Lane 2: Non-transfected lysate.

Storage Buffer

1X Sample Buffer (50 mM Tris-HCl, 2% SDS, 10% glycerol, 300 mM 2-mercaptoethanol, 0.01% Bromophenol blue)

Storage Instruction

Store at -80°C. Aliquot to avoid repeated freezing and thawing.

Applications

- Western Blot

Gene Info — ACTN1

Entrez GeneID[87](#)**GeneBank Accession#**[NM_001102.2](#)**Protein Accession#**[NP_001093.1](#)**Gene Name**

ACTN1

Gene Alias

FLJ40884

Gene Description

actinin, alpha 1

Omim ID[102575](#)**Gene Ontology**[Hyperlink](#)**Gene Summary**

Alpha actinins belong to the spectrin gene superfamily which represents a diverse group of cytoskeletal proteins, including the alpha and beta spectrins and dystrophins. Alpha actinin is an actin-binding protein with multiple roles in different cell types. In nonmuscle cells, the cytoskeletal isoform is found along microfilament bundles and adherens-type junctions, where it is involved in binding actin to the membrane. In contrast, skeletal, cardiac, and smooth muscle isoforms are localized to the Z-disc and analogous dense bodies, where they help anchor the myofibrillar actin filaments. This gene encodes a nonmuscle, cytoskeletal, alpha actinin isoform and maps to the same site as the structurally similar erythroid beta spectrin gene. Three transcript variants encoding different isoforms have been found for this gene. [provided by RefSeq]

Other Designations

F-actin cross-linking protein|actinin 1 smooth muscle|alpha-actinin 1

Pathway

- [Adherens junction](#)
- [Arrhythmogenic right ventricular cardiomyopathy \(ARVC\)](#)
- [Focal adhesion](#)
- [Leukocyte transendothelial migration](#)
- [Regulation of actin cytoskeleton](#)
- [Systemic lupus erythematosus](#)
- [Tight junction](#)

Disease

- [Cleft Lip](#)
- [Cleft Palate](#)