

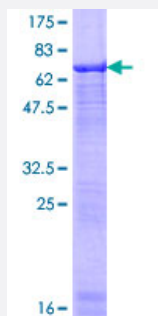
Full-Length

ACTL6A (Human) Recombinant Protein (P02)

Catalog # H00000086-P02

Size 25 ug, 10 ug

Applications



Specification

Product Description

Human ACTL6A full-length ORF (NP_004292.1, 1 a.a. - 429 a.a.) recombinant protein with GST-tag at N-terminal.

Sequence

MSGGVYGGDEVGALVFDIGSYTVRAGYAGEDCPKVDFTPAGMVVERDDGSTLMEIDGDKGKQG
GPTYIDTNALRVPRENMEAISPLKNGMVEDWDSFQAILDHTYKMHVKSEASLHPVLMSEAPWNT
RAKREKLTLMFEHYNIPAFFLCKTAVLTAFANGRSTGLILDSGATHHTAIPVHDGYVLQQGVKSPL
AGDFITMQCRELFQEMNIELVPPYMIASKEAVREGSPANWKRKEKLPQVTRSWHNYMCNCVIQD
FQASVLQVSDSTYDEQVAAQMPTVHYEFPNGYNCDFGAERLKIPEGLFDPSNVKGLSGNTMLGV
SHVVTTSVGMCDIDIRPGLYGSVIVAGGNTLIQSFTDRLNRELSQKTPPSMRLKLIANNTTVERRFS
SWIGGSILASLGTFFQMWISKQEYEEGGKQCVERKCP

Host

Wheat Germ (in vitro)

Theoretical MW (kDa)

73.9

Interspecies Antigen Sequence

Mouse (99); Rat (99)

Preparation Method

[in vitro wheat germ expression system](#)

Purification

Glutathione Sepharose 4 Fast Flow

Quality Control Testing

12.5% SDS-PAGE Stained with Coomassie Blue.

Storage Buffer	50 mM Tris-HCl, 10 mM reduced Glutathione, pH=8.0 in the elution buffer.
Storage Instruction	Store at -80°C. Aliquot to avoid repeated freezing and thawing.
Note	Best use within three months from the date of receipt of this protein.

Applications

- Enzyme-linked Immunoabsorbent Assay
- Western Blot (Recombinant protein)
- Antibody Production
- Protein Array

Gene Info — ACTL6A

Entrez GeneID [86](#)

GeneBank Accession# [NM_004301.3](#)

Protein Accession# [NP_004292.1](#)

Gene Name ACTL6A

Gene Alias ACTL6, ARPN-BETA, Arp4, BAF53A, INO80K, MGC5382

Gene Description actin-like 6A

Omim ID [604958](#)

Gene Ontology [Hyperlink](#)

Gene Summary

This gene encodes a family member of actin-related proteins (ARPs), which share significant amino acid sequence identity to conventional actins. Both actins and ARPs have an actin fold, which includes an ATP-binding cleft, as a common feature. The ARPs are involved in diverse cellular processes, including vesicular transport, spindle orientation, nuclear migration and chromatin remodeling. This gene encodes a 53 kDa subunit protein of the BAF (BRG1/brm-associated factor) complex in mammals, which is functionally related to SWI/SNF complex in *S. cerevisiae* and *Drosophila*; the latter is thought to facilitate transcriptional activation of specific genes by antagonizing chromatin-mediated transcriptional repression. Together with beta-actin, it is required for maximal ATPase activity of BRG1, and for the association of the BAF complex with chromatin/matrix. Three transcript variants that encode two different protein isoforms have been described. [provided by RefSeq]

Other Designations

BAF complex 53 kDa subunit|BAF53|BRG1-associated factor|INO80 complex subunit K|actin-related protein 4|hArpN beta
