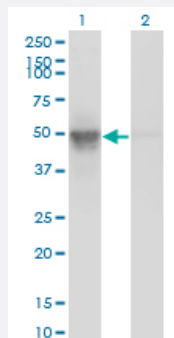


# ACTL6A monoclonal antibody (M10), clone 3C4

Catalog # H00000086-M10

Size 100 ug

## Applications

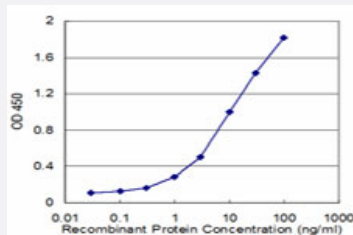


### Western Blot (Transfected lysate)

Western Blot analysis of ACTL6A expression in transfected 293T cell line by ACTL6A monoclonal antibody (M10), clone 3C4.

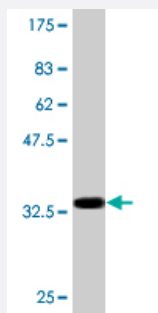
Lane 1: ACTL6A transfected lysate (47.5 KDa).

Lane 2: Non-transfected lysate.



### Sandwich ELISA (Recombinant protein)

Detection limit for recombinant GST tagged ACTL6A is approximately 0.3ng/ml as a capture antibody.



Western Blot detection against Immunogen (34.54 KDa).

## Specification

### Product Description

Mouse monoclonal antibody raised against a partial recombinant ACTL6A.

<b>Immunogen</b>	ACTL6A (NP_817126, 1 a.a. ~ 80 a.a) partial recombinant protein with GST tag. MW of the GST tag alone is 26 KDa.
<b>Sequence</b>	MVVERDDGSTLMEIDGDKGKGGPTYIDTNALRVPRENMEAISPLKNGMVEDWDSFQALDHTY KMHVKSEASLHPVLM
<b>Host</b>	Mouse
<b>Reactivity</b>	Human
<b>Interspecies Antigen Sequence</b>	Mouse (96); Rat (95)
<b>Isotype</b>	IgG1 Kappa
<b>Quality Control Testing</b>	Antibody Reactive Against Recombinant Protein. Western Blot detection against Immunogen (34.54 KDa) .
<b>Storage Buffer</b>	In 1x PBS, pH 7.4
<b>Storage Instruction</b>	Store at -20°C or lower. Aliquot to avoid repeated freezing and thawing.

## Applications

- Western Blot (Transfected lysate)

Western Blot analysis of ACTL6A expression in transfected 293T cell line by ACTL6A monoclonal antibody (M10), clone 3C4.

Lane 1: ACTL6A transfected lysate(47.5 KDa).

Lane 2: Non-transfected lysate.

[Protocol Download](#)

- Western Blot (Recombinant protein)

[Protocol Download](#)

- Sandwich ELISA (Recombinant protein)

Detection limit for recombinant GST tagged ACTL6A is approximately 0.3ng/ml as a capture antibody.

[Protocol Download](#)

- ELISA

## Gene Info — ACTL6A

<b>Entrez GeneID</b>	<a href="#">86</a>
<b>GeneBank Accession#</b>	<a href="#">NM_177989</a>
<b>Protein Accession#</b>	<a href="#">NP_817126</a>
<b>Gene Name</b>	ACTL6A
<b>Gene Alias</b>	ACTL6, ARPN-BETA, Arp4, BAF53A, INO80K, MGC5382
<b>Gene Description</b>	actin-like 6A
<b>Omim ID</b>	<a href="#">604958</a>
<b>Gene Ontology</b>	<a href="#">Hyperlink</a>
<b>Gene Summary</b>	<p>This gene encodes a family member of actin-related proteins (ARPs), which share significant amino acid sequence identity to conventional actins. Both actins and ARPs have an actin fold, which is an ATP-binding cleft, as a common feature. The ARPs are involved in diverse cellular processes, including vesicular transport, spindle orientation, nuclear migration and chromatin remodeling. This gene encodes a 53 kDa subunit protein of the BAF (BRG1/brm-associated factor) complex in mammals, which is functionally related to SWI/SNF complex in <i>S. cerevisiae</i> and <i>Drosophila</i>; the latter is thought to facilitate transcriptional activation of specific genes by antagonizing chromatin-mediated transcriptional repression. Together with beta-actin, it is required for maximal ATPase activity of BRG1, and for the association of the BAF complex with chromatin/matrix. Three transcript variants that encode two different protein isoforms have been described. [provided by RefSeq]</p>
<b>Other Designations</b>	BAF complex 53 kDa subunit BAF53 BRG1-associated factor INO80 complex subunit K actin-related protein 4 hArpN beta