

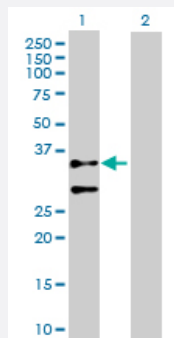
MaxPab®

ACTG2 purified MaxPab rabbit polyclonal antibody (D01P)

Catalog # H00000072-D01P

Size 100 ug

Applications



Western Blot (Transfected lysate)

Western Blot analysis of ACTG2 expression in transfected 293T cell line ([H00000072-T01](#)) by ACTG2 MaxPab polyclonal antibody.

Lane 1: ACTG2 transfected lysate(41.90 KDa).

Lane 2: Non-transfected lysate.

Specification

Product Description	Rabbit polyclonal antibody raised against a full-length human ACTG2 protein.
Immunogen	ACTG2 (NP_001606.1, 1 a.a. ~ 376 a.a) full-length human protein.
Sequence	MCEEETALVCDNGSGLCKAGFAGDDAPRAVFPSVGRPRHQGVMMGMGQKDSYVGDEAQS RGILTLKYPIEHGIITNWDDMEKWHHSFYNELRVAPEEHPTLLTEAPLNPKANREKMTQIMFETFN PAMYVAIQAVLSLYASGRITGMLDSGDGVTHNVPMEGYALPHAIMRLDLAGRDLTDYLMKILTERG YSFVTTAEREIVRDIKEKLCYVALDFENEMATAASSSSLEKSYELPDGQVITIGNERFRCPETLFQP SFIGMESAGIHETTYNSIMKCDIDIRKDLYANNVLSGGTTMYPGIADRMQKEITALAPSTMKIKIAPPE RKYSVWIGGSILASLSTFQQMWISKPEYDEAGPSMHRKCF
Host	Rabbit
Reactivity	Human
Interspecies Antigen Sequence	Mouse (100); Rat (100)
Quality Control Testing	Antibody reactive against mammalian transfected lysate.
Storage Buffer	In 1x PBS, pH 7.4

Storage Instruction

Store at -20°C or lower. Aliquot to avoid repeated freezing and thawing.

Applications

- Western Blot (Transfected lysate)

Western Blot analysis of ACTG2 expression in transfected 293T cell line ([H00000072-T01](#)) by ACTG2 MaxPab polyclonal antibody.

Lane 1: ACTG2 transfected lysate(41.90 KDa).

Lane 2: Non-transfected lysate.

[Protocol Download](#)

Gene Info — ACTG2

Entrez GeneID [72](#)

GeneBank Accession# [NM_001615.3](#)

Protein Accession# [NP_001606.1](#)

Gene Name ACTG2

Gene Alias ACT, ACTA3, ACTE, ACTL3, ACTSG

Gene Description actin, gamma 2, smooth muscle, enteric

Omim ID [102545](#)

Gene Ontology [Hyperlink](#)

Gene Summary Actins are highly conserved proteins that are involved in various types of cell motility, and maintenance of the cytoskeleton. In vertebrates, three main groups of actin isoforms, alpha, beta and gamma have been identified. The alpha actins are found in muscle tissues and are a major constituent of the contractile apparatus. The beta and gamma actins co-exist in most cell types as components of the cytoskeleton, and as mediators of internal cell motility. Actin, gamma 2, encoded by this gene, is a smooth muscle actin found in enteric tissues. [provided by RefSeq]

Other Designations actin, gamma 2|actin-like protein|alpha-actin 3|smooth muscle gamma actin

Pathway

- [Vascular smooth muscle contraction](#)

Disease

- [Cholestasis](#)
- [Pre-Eclampsia](#)
- [Pregnancy Complications](#)