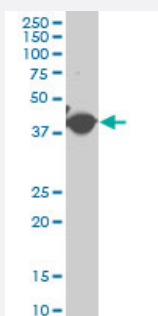


ACTG2 polyclonal antibody (A01)

Catalog # H00000072-A01

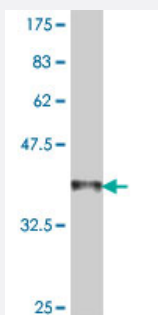
Size 50 uL

Applications



Western Blot (Cell lysate)

ACTG2 polyclonal antibody (A01), Lot # 051206JCO1 Western Blot analysis of ACTG2 expression in NIH/3T3 (Cat # L018V1).



Western Blot detection against Immunogen (37.11 KDa) .

Specification

Product Description

Mouse polyclonal antibody raised against a partial recombinant ACTG2.

Immunogen

ACTG2 (NP_001606, 1 a.a. ~ 100 a.a) partial recombinant protein with GST tag.

Sequence

MCEEETALVCDNGSGLCKAGFAGDDAPRAVFPSVGRPRHQGVMMVGMGQKDSYVGDEAQS
KRGILTLKYPIEHGIITNWDDMEKWHHSFYNELRVAPE

Host

Mouse

Reactivity

Human, Mouse

Interspecies Antigen Sequence

Mouse (100); Rat (100)

Quality Control Testing

Antibody Reactive Against Recombinant Protein.
Western Blot detection against Immunogen (37.11 KDa) .

Storage Buffer

50 % glycerol

Storage Instruction

Store at -20°C or lower. Aliquot to avoid repeated freezing and thawing.

Applications

- Western Blot (Cell lysate)

ACTG2 polyclonal antibody (A01), Lot # 051206JCO1 Western Blot analysis of ACTG2 expression in NIH/3T3 (Cat # L018V1).

[Protocol Download](#)

- Western Blot (Recombinant protein)

[Protocol Download](#)

- ELISA

Gene Info — ACTG2

Entrez GeneID

[72](#)

GeneBank Accession#

[NM_001615](#)

Protein Accession#

[NP_001606](#)

Gene Name

ACTG2

Gene Alias

ACT, ACTA3, ACTE, ACTL3, ACTSG

Gene Description

actin, gamma 2, smooth muscle, enteric

Omim ID

[102545](#)

Gene Ontology

[Hyperlink](#)

Gene Summary

Actins are highly conserved proteins that are involved in various types of cell motility, and maintenance of the cytoskeleton. In vertebrates, three main groups of actin isoforms, alpha, beta and gamma have been identified. The alpha actins are found in muscle tissues and are a major constituent of the contractile apparatus. The beta and gamma actins co-exist in most cell types as components of the cytoskeleton, and as mediators of internal cell motility. Actin, gamma 2, encoded by this gene, is a smooth muscle actin found in enteric tissues. [provided by RefSeq]

Other Designations

actin, gamma 2|actin-like protein|alpha-actin 3|smooth muscle gamma actin

Pathway

- [Vascular smooth muscle contraction](#)

Disease

- [Cholestasis](#)
- [Pre-Eclampsia](#)
- [Pregnancy Complications](#)