

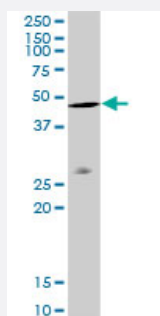
MaxPab®

ACTB purified MaxPab rabbit polyclonal antibody (D01P)

Catalog # H00000060-D01P

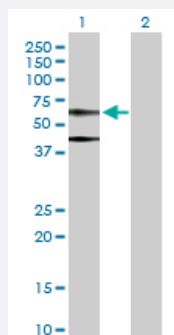
Size 100 ug

Applications



Western Blot (Tissue lysate)

ACTB MaxPab rabbit polyclonal antibody. Western Blot analysis of ACTB expression in mouse intestine.



Western Blot (Transfected lysate)

Western Blot analysis of ACTB expression in transfected 293T cell line ([H00000060-T02](#)) by ACTB MaxPab polyclonal antibody.

Lane 1: ACTB transfected lysate(41.70 KDa).

Lane 2: Non-transfected lysate.

Specification

Product Description

Rabbit polyclonal antibody raised against a full-length human ACTB protein.

Immunogen

ACTB (NP_001092.1, 1 a.a. ~ 375 a.a) full-length human protein.

Sequence

MDDDIAALVVDNGSGMCKAGFAGDDAPRAVFPSSVGRPRHQGVMVGMGQKDSYVGDEAQSKR
 GILTLKYPIEHGIVTNWDDMEKIWHHTFYNELRVAPEEHPVLLTEAPLNPKANREKMTQIMFETFNT
 PAMYVAIQAVLSLYASGRITGIVMDSGDGVTHTVPIYEGYALPHAILRLDLAGRDLTDYLMKILTERG
 YSFTTTAEREIVRDIKEKLCYVALDFEQEMATAASSSSLEKSYELPDGQVITIGNERFRCPEALFQP
 SFLGMESCGIHETTFNSIMKCDVDIRKDLYANTVLSGGTTMYPGIADRMQKEITALAPSTMKIKIAPP
 ERKYSVWIGGSILASLSTFQQMWISKQEYDESGPSVHRKCF

Host

Rabbit

Reactivity	Human, Mouse
Quality Control Testing	Antibody reactive against mammalian transfected lysate.
Storage Buffer	In 1x PBS, pH 7.4
Storage Instruction	Store at -20°C or lower. Aliquot to avoid repeated freezing and thawing.

Applications

- Western Blot (Tissue lysate)

ACTB MaxPab rabbit polyclonal antibody. Western Blot analysis of ACTB expression in mouse intestine.

[Protocol Download](#)

- Western Blot (Transfected lysate)

Western Blot analysis of ACTB expression in transfected 293T cell line ([H00000060-T02](#)) by ACTB MaxPab polyclonal antibody.

Lane 1: ACTB transfected lysate(41.70 KDa).

Lane 2: Non-transfected lysate.

[Protocol Download](#)

Gene Info — ACTB

Entrez GeneID [60](#)

GeneBank Accession# [NM_001101.2](#)

Protein Accession# [NP_001092.1](#)

Gene Name ACTB

Gene Alias PS1TP5BP1

Gene Description actin, beta

Omim ID [102630](#)

Gene Ontology [Hyperlink](#)

Gene Summary This gene encodes one of six different actin proteins. Actins are highly conserved proteins that are involved in cell motility, structure, and integrity. This actin is a major constituent of the contractile apparatus and one of the two nonmuscle cytoskeletal actins. [provided by RefSeq]

Other Designations

PS1TP5-binding protein 1|actin, cytoplasmic 1|beta actin|beta cytoskeletal actin

Pathway

- [Adherens junction](#)
- [Arrhythmogenic right ventricular cardiomyopathy \(ARVC\)](#)
- [Focal adhesion](#)
- [Hypertrophic cardiomyopathy \(HCM\)](#)
- [Leukocyte transendothelial migration](#)
- [Pathogenic Escherichia coli infection - EHEC](#)
- [Regulation of actin cytoskeleton](#)
- [Tight junction](#)
- [Vibrio cholerae infection](#)

Disease

- [Breast cancer](#)
- [Breast Neoplasms](#)