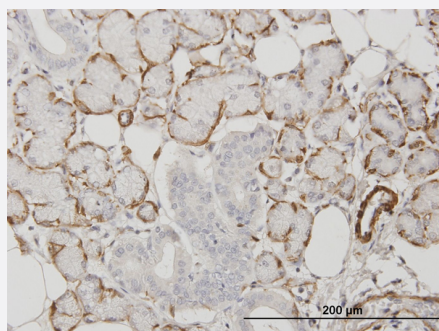


# ACTA2 monoclonal antibody (M01), clone 1D11-2B9

Catalog # H00000059-M01

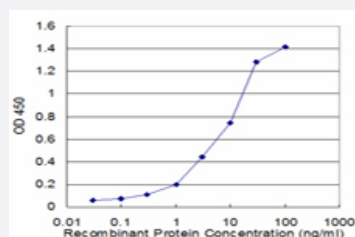
Size 100 ug

## Applications



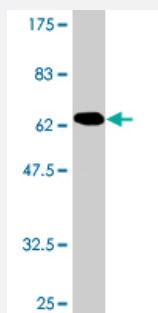
### Immunohistochemistry (Formalin/PFA-fixed paraffin-embedded sections)

Immunoperoxidase of monoclonal antibody to ACTA2 on formalin-fixed paraffin-embedded human salivary gland. [antibody concentration 3 ug/ml]



### Sandwich ELISA (Recombinant protein)

Detection limit for recombinant GST tagged ACTA2 is approximately 0.3ng/ml as a capture antibody.



Western Blot detection against Immunogen (67.21 KDa) .

## Specification

### Product Description

Mouse monoclonal antibody raised against a full-length recombinant ACTA2.

<b>Immunogen</b>	ACTA2 (AAH17554.1, 1 a.a. ~ 377 a.a) full-length recombinant protein with GST tag. MW of the GST tag alone is 26 KDa.
<b>Sequence</b>	MCEEDSTALVCDNGSGLCKAGFAGDDAPRAVFPSIVGRPRHQGMVGMGQKDSYVGDEAQS KRGILTLKYPIEHGIITNWDDMEKWHHSFYNELRVAPEEHPTLLTEAPLNPKANREKMTQIMFETFN VPAMYVAIQAVLSLYASGRTTGMLDSGDGVTHNVPIYEGYALPHAIMRLDLAGRDLTDYLMKILTER GYSFVTTAEREIVRDIKEKLCYVALDFENEMATAASSSSLEKSYELPDGQVITIGNERFRCPETLFQ PSFIGMESAGIHETTYNSIMKCDIDIRKDLYANNVLSGGTTMYPGIADRMQKEITALAPSTMKIKIAPP ERKYSVWIGGSILASLSTFQQMWISKQEYDEAGPSVHRKCF
<b>Host</b>	Mouse
<b>Reactivity</b>	Human
<b>Interspecies Antigen Sequence</b>	Mouse (100); Rat (100)
<b>Isotype</b>	IgG1 Kappa
<b>Quality Control Testing</b>	Antibody Reactive Against Recombinant Protein. Western Blot detection against Immunogen (67.21 KDa) .
<b>Storage Buffer</b>	In 1x PBS, pH 7.4
<b>Storage Instruction</b>	Store at -20°C or lower. Aliquot to avoid repeated freezing and thawing.

## Applications

- Western Blot (Recombinant protein)

[Protocol Download](#)

- Immunohistochemistry (Formalin/PFA-fixed paraffin-embedded sections)

Immunoperoxidase of monoclonal antibody to ACTA2 on formalin-fixed paraffin-embedded human salivary gland. [antibody concentration 3 ug/ml]

[Protocol Download](#)

- Sandwich ELISA (Recombinant protein)

Detection limit for recombinant GST tagged ACTA2 is approximately 0.3ng/ml as a capture antibody.

[Protocol Download](#)

- ELISA

## Gene Info — ACTA2

Entrez GeneID [59](#)

GeneBank Accession# [BC017554](#)

Protein Accession# [AAH17554.1](#)

Gene Name ACTA2

Gene Alias AAT6, ACTSA

Gene Description actin, alpha 2, smooth muscle, aorta

Omim ID [102620](#)

Gene Ontology [Hyperlink](#)

**Gene Summary** The protein encoded by this gene belongs to the actin family of proteins, which are highly conserved proteins that play a role in cell motility, structure and integrity. Alpha, beta and gamma actin isoforms have been identified, with alpha actins being a major constituent of the contractile apparatus, while beta and gamma actins are involved in the regulation of cell motility. This actin is an alpha actin that is found in skeletal muscle. Defects in this gene cause aortic aneurysm familial thoracic type 6. Multiple alternatively spliced variants, encoding the same protein, have been identified. [provided by RefSeq]

**Other Designations** OTTHUMP00000020042|alpha 2 actin|alpha-cardiac actin|growth-inhibiting gene 46

## Pathway

- [Vascular smooth muscle contraction](#)

## Disease

- [Alzheimer Disease](#)
- [Cardiovascular Diseases](#)
- [Diabetes Mellitus](#)
- [Edema](#)
- [Genetic Predisposition to Disease](#)