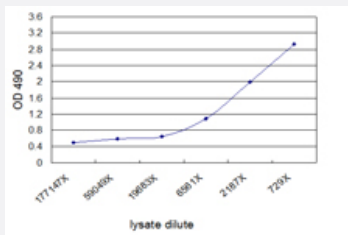


# ACTA2 (Human) Matched Antibody Pair

Catalog # H00000059-AP41

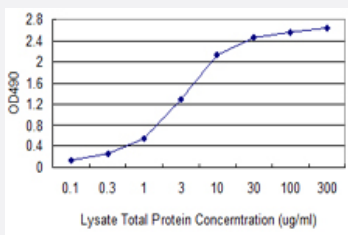
Size 1 Set

## Applications



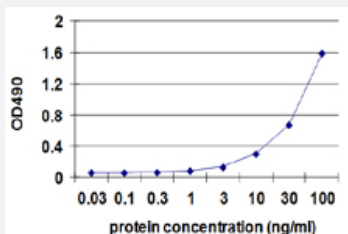
### ELISA Pair (Transfected lysate)

Sandwich ELISA detection sensitivity ranging from approximately 6561x to 729x dilution of the ACTA2 293T overexpression lysate (non-denatured). Standard curve using ACTA2 293T overexpression lysate (non-denatured) as an analyte.



### ELISA Pair (Tissue lysate)

Standard curve using human uterus myoma tissue lysate as an analyte (non-denatured). Sandwich ELISA detection sensitivity ranging from 100 ng/ml to 300 ug/ml for lysate total protein.



Sandwich ELISA detection sensitivity ranging from 0.3 ng/ml to 100 ng/ml.

## Specification

### Product Description

This antibody pair set comes with a matched antibody pair to detect and quantify the protein level of human ACTA2.

Reactivity	Human
Quality Control Testing	Standard curve using recombinant protein ( H00000059-P01 ) as an analyte. Sandwich ELISA detection sensitivity ranging from 0.3 ng/ml to 100 ng/ml.
Supplied Product	Antibody pair set content: 1. Capture antibody: mouse monoclonal anti-ACTA2, IgG2b Kappa (100 ug) 2. Detection antibody: biotinylated mouse monoclonal anti-ACTA2, IgG1 Kappa (50 ug) *Reagents are sufficient for at least 3-5 x 96 well plates using recommended protocols.
Storage Instruction	Store reagents of the antibody pair set at -20°C or lower. Please aliquot to avoid repeated freeze thaw cycle. Reagents should be returned to -20°C storage immediately after use.

## Applications

- ELISA Pair (Recombinant protein)

[Protocol Download](#)

- ELISA Pair (Transfected lysate)

Sandwich ELISA detection sensitivity ranging from approximately 6561x to 729x dilution of the ACTA2 293T overexpression lysate (non-denatured). Standard curve using ACTA2 293T overexpression lysate (non-denatured) as an analyte.

[Protocol Download](#)

- ELISA Pair (Tissue lysate)

Standard curve using human uterus myoma tissue lysate as an analyte (non-denatured). Sandwich ELISA detection sensitivity ranging from 100 ng/ml to 300 ug/ml for lysate total protein.

[Protocol Download](#)

## Gene Info — ACTA2

Entrez GeneID	<a href="#">59</a>
Gene Name	ACTA2
Gene Alias	AAT6, ACTSA
Gene Description	actin, alpha 2, smooth muscle, aorta
Omim ID	<a href="#">102620</a>
Gene Ontology	<a href="#">Hyperlink</a>

**Gene Summary**

The protein encoded by this gene belongs to the actin family of proteins, which are highly conserved proteins that play a role in cell motility, structure and integrity. Alpha, beta and gamma actin isoforms have been identified, with alpha actins being a major constituent of the contractile apparatus, while beta and gamma actins are involved in the regulation of cell motility. This actin is an alpha actin that is found in skeletal muscle. Defects in this gene cause aortic aneurysm familial thoracic type 6. Multiple alternatively spliced variants, encoding the same protein, have been identified. [provided by RefSeq]

**Other Designations**

OTTHUMP00000020042|alpha 2 actin|alpha-cardiac actin|growth-inhibiting gene 46

**Pathway**

- [Vascular smooth muscle contraction](#)

**Disease**

- [Alzheimer Disease](#)
- [Cardiovascular Diseases](#)
- [Diabetes Mellitus](#)
- [Edema](#)
- [Genetic Predisposition to Disease](#)