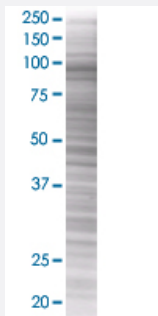


ABR 293T Cell Transient Overexpression Lysate(Denatured)

Catalog # H00000029-T01

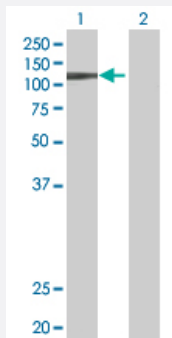
Size 100 uL

Applications



SDS-PAGE Gel

ABR transfected lysate.



Western Blot

Lane 1: ABR transfected lysate (94.6 KDa)

Lane 2: Non-transfected lysate.

Specification

Transfected Cell Line	293T
Plasmid	pCMV-ABR full-length
Host	Human
Theoretical MW (kDa)	94.6
Interspecies Antigen Sequence	Mouse (99); Rat (98)

Quality Control Testing

Transient overexpression cell lysate was tested with Anti-ABR antibody ([H00000029-B01](#)) by Western Blots.
SDS-PAGE Gel
ABR transfected lysate.
Western Blot
Lane 1: ABR transfected lysate (94.6 KDa)
Lane 2: Non-transfected lysate.

Storage Buffer

1X Sample Buffer (50 mM Tris-HCl, 2% SDS, 10% glycerol, 300 mM 2-mercaptoethanol, 0.01% Bromophenol blue)

Storage Instruction

Store at -80°C. Aliquot to avoid repeated freezing and thawing.

Applications

- Western Blot

Gene Info — ABR

Entrez GeneID

[29](#)

GeneBank Accession#

[NM_021962](#)

Protein Accession#

[NP_068781](#)

Gene Name

ABR

Gene Alias

FLJ45954, MDB

Gene Description

active BCR-related gene

Omim ID

[155255 600365](#)

Gene Ontology

[Hyperlink](#)

Gene Summary

This gene encodes a protein that is similar to the protein encoded by the breakpoint cluster region gene located on chromosome 22. The protein encoded by this gene contains a GTPase-activating protein domain, a domain found in members of the Rho family of GTP-binding proteins. Functional studies in mice determined that this protein plays a role in vestibular morphogenesis, suggesting that Rho-related GTPases help coordinate motor skills and balance. Alternatively spliced transcript variants that encode different isoforms have been reported for this gene. [provided by RefSeq]

Other Designations

active breakpoint cluster region-related protein

Disease

- [Tobacco Use Disorder](#)