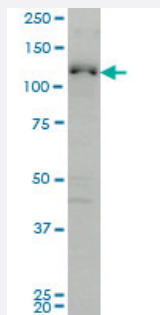


ABL2 monoclonal antibody (M03), clone 6D5

Catalog # H00000027-M03

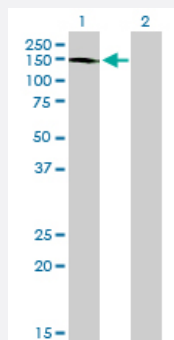
Size 100 ug

Applications



Western Blot (Cell lysate)

ABL2 monoclonal antibody (M03), clone 6D5. Western Blot analysis of ABL2 expression in HeLa S3 NE (Cat # L013V3).

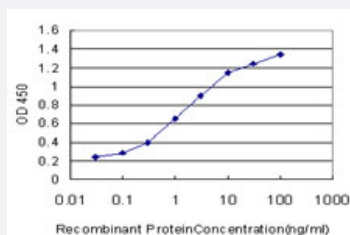


Western Blot (Transfected lysate)

Western Blot analysis of ABL2 expression in transfected 293T cell line by ABL2 monoclonal antibody (M03), clone 6D5.

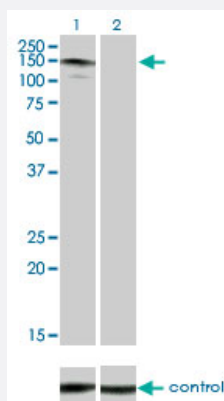
Lane 1: ABL2 transfected lysate(126.7 KDa).

Lane 2: Non-transfected lysate.



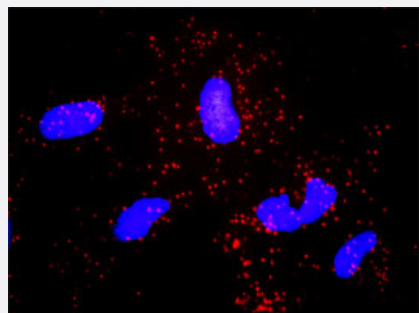
Sandwich ELISA (Recombinant protein)

Detection limit for recombinant GST tagged ABL2 is approximately 0.03ng/ml as a capture antibody.



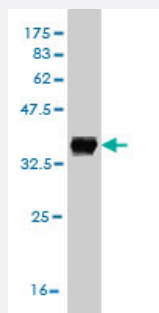
RNAi Knockdown (Antibody validated)

Western blot analysis of ABL2 over-expressed 293 cell line, cotransfected with ABL2 Validated Chimera RNAi (Cat # H00000027-R01V) (Lane 2) or non-transfected control (Lane 1). Blot probed with ABL2 monoclonal antibody (M03) clone 6D5 (Cat # H00000027-M03). GAPDH (36.1 kDa) used as specificity and loading control.



In situ Proximity Ligation Assay (Cell)

Proximity Ligation Analysis of protein-protein interactions between NCK1 and ABL2. HeLa cells were stained with anti-NCK1 rabbit purified polyclonal 1:1200 and anti-ABL2 mouse monoclonal antibody 1:50. Each red dot represents the detection of protein-protein interaction complex, and nuclei were counterstained with DAPI (blue).



Western Blot detection against Immunogen (36.41 KDa) .

Specification

Product Description	Mouse monoclonal antibody raised against a partial recombinant ABL2.
Immunogen	ABL2 (AAH65912, 743 a.a. ~ 842 a.a) partial recombinant protein with GST tag. MW of the GST tag alone is 26 KDa.
Sequence	KKTLGLRAGKPTASDDTSKPFPRSNSTSSMSSGLPEQDRMAMTLPRNCQRSKLQLERTVSTSS QPEENVDRANDMLPKKSEESAAPSRERP KAKLLPRGA
Host	Mouse
Reactivity	Human
Interspecies Antigen Sequence	Mouse (98); Rat (98)

Isotype	IgG2a Kappa
Quality Control Testing	Antibody Reactive Against Recombinant Protein. Western Blot detection against Immunogen (36.41 KDa) .
Storage Buffer	In 1x PBS, pH 7.4
Storage Instruction	Store at -20°C or lower. Aliquot to avoid repeated freezing and thawing.

Applications

- Western Blot (Cell lysate)

ABL2 monoclonal antibody (M03), clone 6D5. Western Blot analysis of ABL2 expression in Hela S3 NE (Cat # L013V3).

[Protocol Download](#)

- Western Blot (Transfected lysate)

Western Blot analysis of ABL2 expression in transfected 293T cell line by ABL2 monoclonal antibody (M03), clone 6D5.

Lane 1: ABL2 transfected lysate(126.7 KDa).

Lane 2: Non-transfected lysate.

[Protocol Download](#)

- Western Blot (Recombinant protein)

[Protocol Download](#)

- Sandwich ELISA (Recombinant protein)

Detection limit for recombinant GST tagged ABL2 is approximately 0.03ng/ml as a capture antibody.

[Protocol Download](#)

- ELISA

- RNAi Knockdown (Antibody validated)

Western blot analysis of ABL2 over-expressed 293 cell line, cotransfected with ABL2 Validated Chimera RNAi (Cat # H00000027-R01V) (Lane 2) or non-transfected control (Lane 1). Blot probed with ABL2 monoclonal antibody (M03) clone 6D5 (Cat # H00000027-M03). GAPDH (36.1 kDa) used as specificity and loading control.

[Protocol Download](#)

- *In situ* Proximity Ligation Assay (Cell)

Proximity Ligation Analysis of protein-protein interactions between NCK1 and ABL2. HeLa cells were stained with anti-NCK1 rabbit purified polyclonal 1:1200 and anti-ABL2 mouse monoclonal antibody 1:50. Each red dot represents the detection of protein-protein interaction complex, and nuclei were counterstained with DAPI (blue).

Gene Info — ABL2

Entrez GeneID	27
GeneBank Accession#	BC065912
Protein Accession#	AAH65912
Gene Name	ABL2
Gene Alias	ABLL, ARG, FLJ22224, FLJ31718, FLJ41441
Gene Description	v-abl Abelson murine leukemia viral oncogene homolog 2 (arg, Abelson-related gene)
Omim ID	164690
Gene Ontology	Hyperlink
Gene Summary	This gene encodes a member of the Abelson family of nonreceptor tyrosine protein kinase. The protein is highly similar to the ABL1 protein, including the tyrosine kinase, SH2 and SH3 domains, and has a role in cytoskeletal rearrangements by its C-terminal F-actin- and microtubule-binding sequences. This gene is expressed in both normal and tumor cells, and is involved in translocation with the ETV6 gene in leukemia. Multiple alternatively spliced transcript variants encoding different protein isoforms have been found for this gene. [provided by RefSeq]
Other Designations	Abelson murine leukemia viral (v-abl) oncogene homolog 2 Abelson-related gene protein OTTHU MP00000033139 arg tyrosine kinase v-abl Abelson murine leukemia viral oncogene homolog 2

Publication Reference

- [ABL kinases regulate the stabilization of HIF-1 \$\alpha\$ and MYC through CPSF1.](#)

Benjamin Mayro, Jacob P Hoj, Christian G Cerda-Smith, Haley M Hutchinson, Michael W Caminear, Hannah L Thrash, Peter S Winter, Suzanne E Wardell, Donald P McDonnell, Colleen Wu, Kris C Wood, Ann Marie Pendergast.

PNAS 2023 Apr; 120(16):e221041812.

Application: WB-Ce, WB-Tr, Human, HKE293T, PC9 cells

- [ABL kinases regulate translation in HER2+ cells through Y-box-binding protein 1 to facilitate colonization of the brain.](#)

Courtney M McKernan, Aaditya Khatri, Molly Hannigan, Jessica Child, Qiang Chen, Benjamin Mayro, David Snyder, Christopher V Nicchitta, Ann Marie Pendergast.

Cell Reports 2022 Aug; 40(9):111268.

Application: WB-Ce, WB-Tr, Human, ErbB2-BrM2, HCC1954-LCC1 cells

- [A TAZ-AXL-ABL2 Feed-Forward Signaling Axis Promotes Lung Adenocarcinoma Brain Metastasis.](#)

Hoj JP, Mayro B, Pendergast AM.

Cell Reports 2019 Dec; 29(11):3421.

Application: IP-WB, WB-Ce, WB-Tr, Human, PC9-Tet-TAZ4SA, PC9-BrM3, PC9, PC9-Tet-ABL2PP cells

Pathway

- [ErbB signaling pathway](#)

Disease

- [Alzheimer disease](#)
- [Cardiovascular Diseases](#)
- [Diabetes Complications](#)
- [Diabetes Mellitus](#)
- [Edema](#)
- [Metabolic Syndrome X](#)
- [Neoplasms](#)
- [Osteoporosis](#)