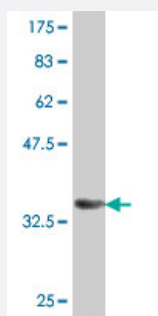


# ABCF1 polyclonal antibody (A01)

Catalog # H00000023-A01

Size 50 uL

## Applications



Western Blot detection against Immunogen (36.89 KDa) .

## Specification

<b>Product Description</b>	Mouse polyclonal antibody raised against a partial recombinant ABCF1.
<b>Immunogen</b>	ABCF1 (NP_001081, 642 a.a. ~ 739 a.a) partial recombinant protein with GST tag.
<b>Sequence</b>	GEMRKNHRLKIGFFNQYAEQLRMEETPTEYLQRGFNLPHYQDARKCLGRFGLESHAHTIQICKLSG GQKARVVFAELACREPDVILDEPTNNLDIES
<b>Host</b>	Mouse
<b>Reactivity</b>	Human
<b>Interspecies Antigen Sequence</b>	Mouse (98); Rat (99)
<b>Quality Control Testing</b>	Antibody Reactive Against Recombinant Protein. Western Blot detection against Immunogen (36.89 KDa) .
<b>Storage Buffer</b>	50 % glycerol
<b>Storage Instruction</b>	Store at -20°C or lower. Aliquot to avoid repeated freezing and thawing.

## Applications

- Western Blot (Recombinant protein)

[Protocol Download](#)

- ELISA

## Gene Info — ABCF1

Entrez GeneID [23](#)

GeneBank Accession# [NM\\_001090](#)

Protein Accession# [NP\\_001081](#)

Gene Name ABCF1

Gene Alias ABC27, ABC50

Gene Description ATP-binding cassette, sub-family F (GCN20), member 1

Omim ID [603429](#)

Gene Ontology [Hyperlink](#)

**Gene Summary** The protein encoded by this gene is a member of the superfamily of ATP-binding cassette (ABC) transporters. ABC proteins transport various molecules across extra- and intra-cellular membranes. ABC genes are divided into seven distinct subfamilies (ABC1, MDR/TAP, MRP, ALD, OABP, GCN20, White). This protein is a member of the GCN20 subfamily. Unlike other members of the superfamily, this protein lacks the transmembrane domains which are characteristic of most ABC transporters. This protein may be regulated by tumor necrosis factor-alpha and play a role in enhancement of protein synthesis and the inflammation process. [provided by RefSeq]

**Other Designations** ATP-binding cassette 50 (TNF-alpha stimulated)|ATP-binding cassette, sub-family F, member 1|OTTHUMP00000029110|OTTHUMP00000029111|TNFalpha-inducible ATP-binding protein

## Disease

- [Genetic Predisposition to Disease](#)
- [Lupus Erythematosus](#)
- [Spondylitis](#)