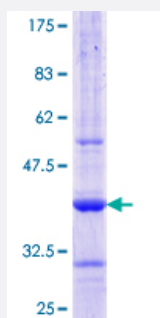


# AAMP (Human) Recombinant Protein (Q01)

Catalog # H00000014-Q01

Size 25 ug, 10 ug

## Applications



## Specification

<b>Product Description</b>	Human AAMP partial ORF ( NP_001078.2, 111 a.a. - 210 a.a.) recombinant protein with GST-tag at N-terminal.
<b>Sequence</b>	GEDDKAFVWRLSDGELLFECAGHKDSVTCAGFSDSTLVATGDMSGLLKVWQVDTKEEVWSF EAGDLEWMEWHPRAPVLLAGTADGNTWMWKVPNGDCKT
<b>Host</b>	Wheat Germ (in vitro)
<b>Theoretical MW (kDa)</b>	36.74
<b>Interspecies Antigen Sequence</b>	Mouse (99); Rat (99)
<b>Preparation Method</b>	<a href="#">in vitro wheat germ expression system</a>
<b>Purification</b>	Glutathione Sepharose 4 Fast Flow
<b>Quality Control Testing</b>	12.5% SDS-PAGE Stained with Coomassie Blue.
<b>Storage Buffer</b>	50 mM Tris-HCl, 10 mM reduced Glutathione, pH=8.0 in the elution buffer.
<b>Storage Instruction</b>	Store at -80°C. Aliquot to avoid repeated freezing and thawing.
<b>Note</b>	Best use within three months from the date of receipt of this protein.

## Applications

- Enzyme-linked Immunoabsorbent Assay
- Western Blot (Recombinant protein)
- Antibody Production
- Protein Array

## Gene Info — AAMP

Entrez GeneID [14](#)

GeneBank Accession# [NM\\_001087](#)

Protein Accession# [NP\\_001078.2](#)

Gene Name AAMP

Gene Alias -

Gene Description angio-associated, migratory cell protein

Omim ID [603488](#)

Gene Ontology [Hyperlink](#)

**Gene Summary** The gene product is an immunoglobulin-type protein. It is found to be expressed strongly in endothelial cells, cytotrophoblasts, and poorly differentiated colon adenocarcinoma cells found in lymphatics. The protein contains a heparin-binding domain and mediates heparin-sensitive cell adhesion . [provided by RefSeq]

Other Designations -