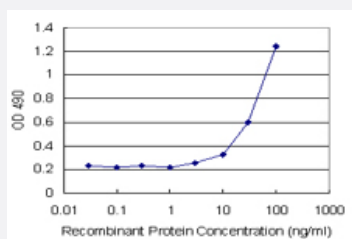


SERPINA3 (Human) Matched Antibody Pair

Catalog # H00000012-AP44 Size 1 Set

Applications



Sandwich ELISA detection sensitivity ranging from 3 ng/ml to 100 ng/ml.

Specification

Product Description	This antibody pair set comes with a matched antibody pair to detect and quantify the protein level of human SERPINA3.
Reactivity	Human
Quality Control Testing	Standard curve using recombinant protein (H00000012-P02) as an analyte. Sandwich ELISA detection sensitivity ranging from 3 ng/ml to 100 ng/ml.
Supplied Product	Antibody pair set content: 1. Capture antibody: mouse monoclonal anti-SERPINA3 (100 ug) 2. Detection antibody: biotinylated mouse monoclonal anti-SERPINA3, IgG2a Kappa (50 ug) *Reagents are sufficient for at least 3-5 x 96 well plates using recommended protocols.
Storage Instruction	Store reagents of the antibody pair set at -20°C or lower. Please aliquot to avoid repeated freeze thaw cycle. Reagents should be returned to -20°C storage immediately after use.

Applications

- ELISA Pair (Recombinant protein)

[Protocol Download](#)

Gene Info — SERPINA3

Entrez GeneID	12
Gene Name	SERPINA3
Gene Alias	AACT, ACT, GIG24, GIG25, MGC88254
Gene Description	serpin peptidase inhibitor, clade A (alpha-1 antiproteinase, antitrypsin), member 3
Omim ID	107280
Gene Ontology	Hyperlink
Gene Summary	The protein encoded by this gene is a plasma protease inhibitor and member of the serine protease inhibitor class. Polymorphisms in this protein appear to be tissue specific and influence protease targeting. Variations in this protein's sequence have been implicated in Alzheimer's disease, and deficiency of this protein has been associated with liver disease. Mutations have been identified in patients with Parkinson disease and chronic obstructive pulmonary disease. [provided by RefSeq]
Other Designations	alpha-1-antichymotrypsin antichymotrypsin growth-inhibiting protein 24 growth-inhibiting protein 25 serine (or cysteine) proteinase inhibitor, clade A (alpha-1 antiproteinase, antitrypsin), member 3 serine (or cysteine) proteinase inhibitor, clade A, memb

Disease

- [Acute Disease](#)
- [alpha 1-Antitrypsin Deficiency](#)
- [Alpha-1-antitrypsin deficiency](#)
- [Alzheimer disease](#)
- [Aneurysm](#)
- [Asthma](#)
- [Brain Ischemia](#)
- [Bronchial Hyperreactivity](#)
- [Cardiovascular Diseases](#)
- [Cerebral Amyloid Angiopathy](#)
- [Cerebral Hemorrhage](#)

- [Cerebrovascular Accident](#)
- [Chronic Disease](#)
- [Cognition](#)
- [Cognition Disorders](#)
- [Cystic fibrosis](#)
- [Dementia](#)
- [Diabetes Complications](#)
- [Diabetes Mellitus](#)
- [Disease Progression](#)
- [Edema](#)
- [Encephalitis](#)
- [Genetic Predisposition to Disease](#)
- [Hemorrhage](#)
- [Hypercholesterolemia](#)
- [Hypersensitivity](#)
- [Hypertension](#)
- [Inflammation](#)
- [Intracranial Aneurysm](#)
- [Kidney Failure](#)
- [Lung Neoplasms](#)
- [Macular Degeneration](#)
- [Mental Status Schedule](#)
- [Metabolic Syndrome X](#)
- [Multiple System Atrophy](#)
- [Myocardial Infarction](#)
- [Myocardial Ischemia](#)

- [Myositis](#)
- [Neoplasms](#)
- [Neuropsychological Tests](#)
- [Osteoarthritis](#)
- [Osteoporosis](#)
- [Pancreatitis](#)
- [Parkinson disease](#)
- [Prostate cancer](#)
- [Prostatic Hyperplasia](#)
- [Prostatic Neoplasms](#)
- [Pulmonary Disease](#)
- [Pulmonary Emphysema](#)
- [Stroke](#)
- [Subarachnoid Hemorrhage](#)
- [Vasculitis](#)
- [Wegener Granulomatosis](#)