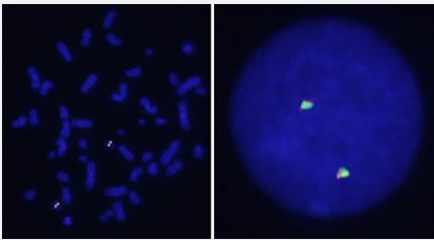


ERBB2 Split FISH Probe

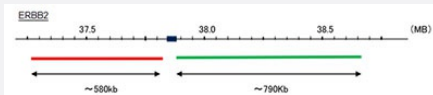
Catalog # FS0109 Size 100 uL

Applications



Hybridization position of the probes on the chromosome.

Hybridization position of the probes on the chromosome.



Specification

Product Description

Labeled FISH probes for identification of gene split using Fluorescent In Situ Hybridization Technique. e. ([Technology](#)).

Probe 1

Name: ERBB2
Size: Approximately 580kb
Fluorophore: Texas Red
Location: 17q12

Probe 2

Name: ERBB2
Size: Approximately 790kb
Fluorophore: FITC
Location: 17q12

Origin

Human

Source	Genomic DNA
Reactivity	Human
Form	Liquid
Notice	We strongly recommend the customer to use FFPE FISH PreTreatment Kit 1 (Catalog #: KA2375 or KA2691) for the pretreatment of Formalin-Fixed Paraffin-Embedded (FFPE) tissue sections.
Regulatory Status	For research use only (RUO)
Quality Control Testing	Representative images of normal human cell (lymphocyte) stain with the dual color FISH probe. The left image is chromosomes at metaphase, and the right image is an interphase nucleus.
Supplied Product	DAPI Counterstain (1500 ng/mL) 125 uL for each 100 uL FISH Probe
Storage Instruction	Store at 4°C in the dark.
Note	Hybridization position of the probes on the chromosome. Hybridization position of the probes on the chromosome.
Self-Attestation	Abnova self-attests to comply with the U.S. Framework for Nucleic Acid Synthesis Screening

Applications

- Fluorescent In Situ Hybridization (Cell)

[Protocol Download](#)

Gene Info — ERBB2

Entrez GeneID	2064
Gene Name	ERBB2
Gene Alias	CD340, HER-2, HER-2/neu, HER2, NEU, NGL, TKR1
Gene Description	v-erb-b2 erythroblastic leukemia viral oncogene homolog 2, neuro/glioblastoma derived oncogene homolog (avian)
Omim ID	137215 137800 164870 211980
Gene Ontology	Hyperlink

Gene Summary

This gene encodes a member of the epidermal growth factor (EGF) receptor family of receptor tyrosine kinases. This protein has no ligand binding domain of its own and therefore cannot bind growth factors. However, it does bind tightly to other ligand-bound EGF receptor family members to form a heterodimer, stabilizing ligand binding and enhancing kinase-mediated activation of downstream signalling pathways, such as those involving mitogen-activated protein kinase and phosphatidylinositol-3 kinase. Allelic variations at amino acid positions 654 and 655 of isoform a (positions 624 and 625 of isoform b) have been reported, with the most common allele, Ile654/Ile655, shown here. Amplification and/or overexpression of this gene has been reported in numerous cancers, including breast and ovarian tumors. Alternative splicing results in several additional transcript variants, some encoding different isoforms and others that have not been fully characterized. [provided by RefSeq]

Other Designations

c-erb B2/neu protein|erbB-2|herstatin|neuroblastoma/glioblastoma derived oncogene homolog|v-erb-b2 avian erythroblastic leukemia viral oncogene homolog 2 (neuro/glioblastoma derived oncogene homolog)

Pathway

- [Adherens junction](#)
- [Bladder cancer](#)
- [Calcium signaling pathway](#)
- [Endometrial cancer](#)
- [ErbB signaling pathway](#)
- [Focal adhesion](#)
- [Non-small cell lung cancer](#)
- [Pancreatic cancer](#)
- [Pathways in cancer](#)
- [Prostate cancer](#)

Disease

- [Adenocarcinoma](#)
- [Ataxia telangiectasia](#)
- [Brain Neoplasms](#)
- [Breast cancer](#)

- [Breast Neoplasms](#)
- [Carcinoma](#)
- [Cell Transformation](#)
- [Cleft Lip](#)
- [Cleft Palate](#)
- [Colorectal Neoplasms](#)
- [Disease Progression](#)
- [Endometrial Neoplasms](#)
- [Esophageal Neoplasms](#)
- [Fibroadenoma](#)
- [Gastritis](#)
- [Genetic Predisposition to Disease](#)
- [Glioma](#)
- [Head and Neck Neoplasms](#)
- [Heart Diseases](#)
- [Kidney Failure](#)
- [Laryngeal Neoplasms](#)
- [Lung Neoplasms](#)
- [Lymphatic Metastasis](#)
- [Mouth Neoplasms](#)
- [Neoplasm Invasiveness](#)
- [Neoplasm Metastasis](#)
- [Neoplasm Recurrence](#)
- [Neoplasms](#)
- [Obesity](#)
- [Ovarian cancer](#)

- [Ovarian Neoplasms](#)
- [Pancreatic cancer](#)
- [Pancreatic Neoplasms](#)
- [Papillomavirus Infections](#)
- [Pharyngeal Neoplasms](#)
- [Prostate cancer](#)
- [Prostatic Hyperplasia](#)
- [Prostatic Neoplasms](#)
- [Pulmonary Disease](#)
- [Skin Neoplasms](#)
- [Stomach Neoplasms](#)
- [Thyroid Neoplasms](#)
- [Tooth Abnormalities](#)
- [Urinary Bladder Neoplasms](#)
- [Uterine Cervical Neoplasms](#)
- [Werner syndrome](#)