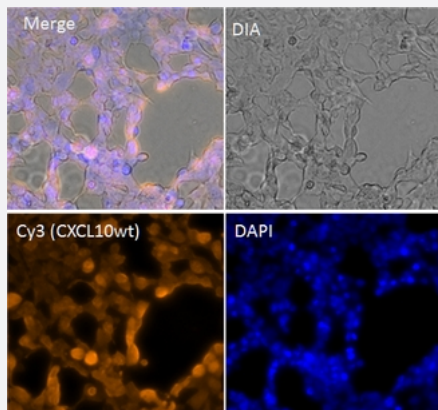


mutaFISH™ CXCL10wt RNA Probes

Catalog # FP0026

Size 1 Probe Set

Applications



mutation specific, Fluorescence *In Situ* Hybridization (Cells)

mutaFISH™ staining was performed *in situ* in CXCL10 transfected 293 cells. CXCL10 was detected via orange signal (Cy3).

Specification

Product Description

mutaFISH™ CXCL10wt RNA Probes is designed to detect human CXCL10 gene on single strand RNA in cells using padlock probe and *in situ* rolling-circle amplification technology.

Reactivity

Human

Supplied Product

Content:

1. RT CXCL10 Primer
2. mutaFISH™ CXCL10wt RNA Probe
3. Detection Probe-Aqua 431

Technology

[mutaFISH™ \(mutation-specific Fluorescence *In Situ* Hybridization\)](#)

Comparison

[FISH Probes vs mutaFISH™ Probes](#)

Fluorophore

Aqua 431 (Excitation Peak (nm): 431; Emission Peak (nm): 480)

Probe Position

Regulatory Status

For research use only (RUO)

Storage Instruction

Store at -20°C.
Aliquot to avoid repeated freezing and thawing.

Note

We recommend mutaFISH™ RNA Accessory Kit (Catalog #: [KA4915](#)) which provides necessary reagents and enzymes for *in situ* reverse transcription, RNA digestion, mutaFISH™ hybridization, ligation and amplification prior to mutaFISH™.

Video

Applications

- mutation specific, Fluorescence *In Situ* Hybridization (Cells)

mutaFISH™ staining was performed *in situ* in CXCL10 transfected 293 cells. CXCL10 was detected via orange signal (Cy3).