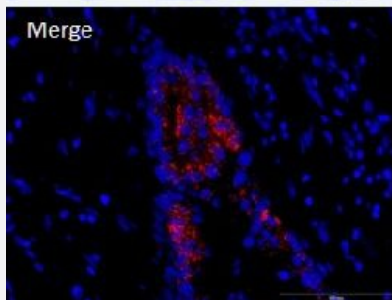
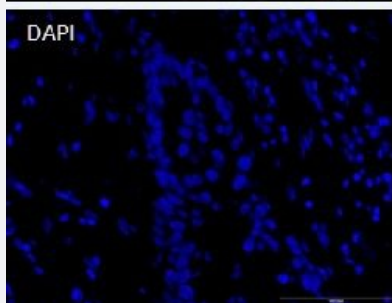
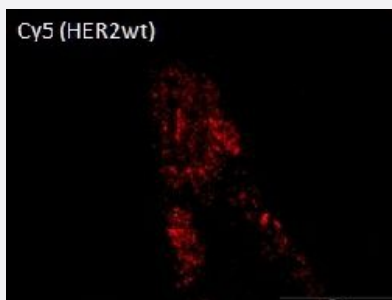


mutaFISH™ HER2wt RNA Probes

Catalog # FP0022

Size 1 Probe Set

Applications



mutation specific, Fluorescence *In Situ* Hybridization (FFPE Tissue)

mutaFISH™ staining was performed *in situ* in human FFPE breast cancer tissue. HER2 gene was detected via red signal (Cy5).

Specification

Product Description

mutaFISH™ HER2wt RNA Probes is designed to detect human HER2 gene on single strand RNA in cells using padlock probe and *in situ* rolling-circle amplification technology.

Reactivity

Human

Supplied Product	Content: 1. RT HER2 Primer 2. mutaFISH™ HER2wt RNA Probe 3. Detection Probe-Texas Red X
Technology	mutaFISH™ (mutation-specific Fluorescence <i>In Situ</i> Hybridization)
Comparison	FISH Probes vs mutaFISH™ Probes
Fluorophore	Texas Red X (Excitation Peak (nm): 595; Emission Peak 613)
Probe Position	
Regulatory Status	For research use only (RUO)
Storage Instruction	Store at -20°C. Aliquot to avoid repeated freezing and thawing.
Note	We recommend mutaFISH™ RNA Accessory Kit (Catalog #: KA4915) which provides necessary reagents and enzymes for <i>in situ</i> reverse transcription, RNA digestion, mutaFISH™ hybridization, ligation and amplification prior to mutaFISH™.

Video

Applications

- mutation specific, Fluorescence *In Situ* Hybridization (FFPE Tissue)

mutaFISH™ staining was performed *in situ* in human FFPE breast cancer tissue. HER2 gene was detected via red signal (Cy5).