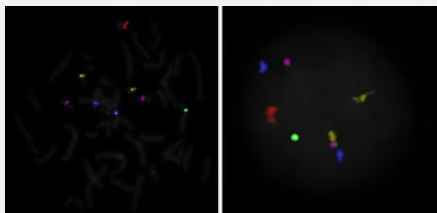


5-Color FISH Probe (chromosome 13, 18, 21, X & Y)

Catalog # FM0003

Size 100 uL

Applications



Hybridization position of the probes on the chromosome:

Hybridization position of the probes on the chromosome:

□

Specification

Product Description

Labeled FISH probes for identification of prenatal chromosomal aberrations using Fluorescent In Situ Hybridization Technique. ([Technology](#)).

Probe 1

Name: CEN13q
Size: Approximately 550kb
Fluorophore: DEAC
Location: 13q12.11

Probe 2

Name: CEN18q
Size: Approximately 660kb
Fluorophore: Cy5
Location: 18q11.2

Probe 3	Name: CEN21q (DYRK1A Gene /Down syndrome critical region) Size: Approximately 550kb Fluorophore: R6G Location: 21q22.13
Probe 4	Name: CENXp Size: Approximately 550kb Fluorophore: FITC Location: Xp11.23
Probe 5	Name: CENYq Size: Approximately 470kb Fluorophore: Tex Red Location: Yq11.221
Origin	Human
Source	Genomic DNA
Reactivity	Human
Notice	We strongly recommend the customer to use FFPE FISH PreTreatment Kit 1 (Catalog #: KA2375 or KA2691) for the pretreatment of Formalin-Fixed Paraffin-Embedded (FFPE) tissue sections.
Regulation Status	For research use only (RUO)
Quality Control Testing	Representative images of normal human cell (lymphocyte) stain with the multi-color FISH probe. The left image is chromosomes at metaphase, and the right image is an interphase nucleus (CEN13q, blue; CEN18q, pink; CEN21q, yellow; CENXp, red; CENYq, green).
Storage Instruction	Store at 4°C in the dark.
Note	Hybridization position of the probes on the chromosome: Hybridization position of the probes on the chromosome:

Applications

- Fluorescent In Situ Hybridization (Cell)

[Protocol Download](#)