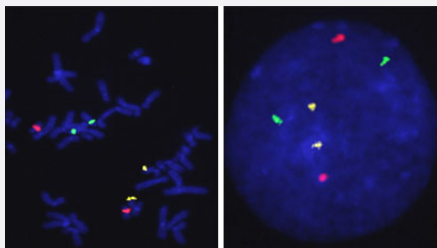


3-Color FISH Probe (chromosome 13, 18 & 21)

Catalog # FM0001

Size 100 uL

Applications



Hybridization position of the probes on the chromosome:

Hybridization position of the probes on the chromosome:

□

Specification

Product Description

Labeled FISH probes for identification of prenatal chromosomal aberrations using Fluorescent In Situ Hybridization Technique. ([Technology](#)).

Probe 1

Name: CEN13q
Size: Approximately 550kb
Fluorophore: FITC
Location: 13q12.11

Probe 2

Name: CEN18q
Size: Approximately 660kb
Fluorophore: Texas Red
Location: 18q11.2

Probe 3**Name:** CEN21q (DYRK1A Gene /Down syndrome critical region)**Size:** Approximately 550kb**Fluorophore:** R6G**Location:** 21q22.13**Origin**

Human

Source

Genomic DNA

Reactivity

Human

Notice

We **strongly recommend** the customer to use FFPE FISH PreTreatment Kit 1 (Catalog #: [KA2375](#) or [KA2691](#)) for the pretreatment of Formalin-Fixed Paraffin-Embedded (FFPE) tissue sections.

Regulation Status

For research use only (RUO)

Quality Control Testing

Representative images of normal human cell (lymphocyte) stain with the multi-color FISH probe. The left image is chromosomes at metaphase, and the right image is an interphase nucleus (CEN13q, green; CEN18q, red; CEN21q, yellow).

Storage Instruction

Store at 4°C in the dark.

Note

Hybridization position of the probes on the chromosome:

Hybridization position of the probes on the chromosome:

Applications

- Fluorescent In Situ Hybridization (Cell)

[Protocol Download](#)