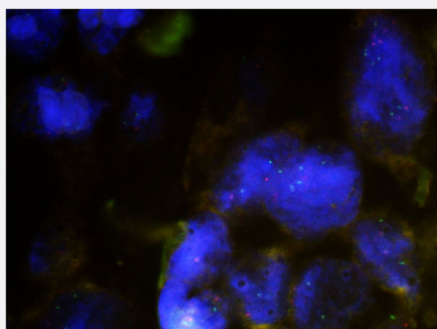


CX43/CEN6 FISH Probe

Catalog # FG0008

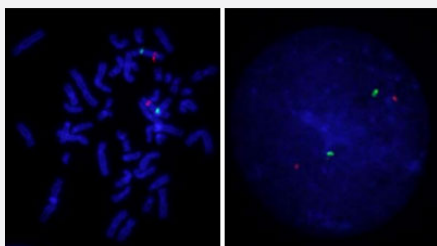
Size 200 uL, 100 uL

Applications



Fluorescent *In Situ* Hybridization (Formalin/PFA-fixed paraffin-embedded sections)

Human breast cancer (FFPE) stained with CX43/CEN6 FISH Probe. Human breast cancer showed no CX43 gene amplification.



Hybridization position of the probes on the chromosome.

□

Hybridization position of the probes on the chromosome.

Specification

Product Description

Labeled FISH probes for identification of gene amplification using Fluorescent In Situ Hybridization Technique. ([Technology](#)).

Probe 1	Name: CX43 Size: Approximately 150kb Fluorophore: Texas Red Location: 6q21-q23.2
Probe 2	Name: CEN6p Size: Approximately 660kb Fluorophore: FITC Location: 6p12.1
Probe Gap	The gap between two probes is approximately 66,600 kb.
Origin	Human
Source	Genomic DNA
Reactivity	Human
Form	Liquid
Notice	We strongly recommend the customer to use FFPE FISH PreTreatment Kit 1 (Catalog #: KA2375 or KA2691) for the pretreatment of Formalin-Fixed Paraffin-Embedded (FFPE) tissue sections.
Regulation Status	For research use only (RUO)
Quality Control Testing	Representative images of normal human cell (lymphocyte) stain with the dual color FISH probe. The left image is chromosomes at metaphase, and the right image is an interphase nucleus.
Supplied Product	DAPI Counterstain (1500 ng/mL) 125 uL for each 100 uL FISH Probe
Storage Instruction	Store at 4°C in the dark.
Note	Hybridization position of the probes on the chromosome. Hybridization position of the probes on the chromosome.

Applications

- Fluorescent In Situ Hybridization (Cell)

[Protocol Download](#)

- Fluorescent *In Situ* Hybridization (Formalin/PFA-fixed paraffin-embedded sections)

Human breast cancer (FFPE) stained with CX43/CEN6 FISH Probe. Human breast cancer showed no CX43 gene amplification.

[Protocol Download](#)

Gene Info — GJA1

Entrez GeneID	2697
Gene Name	GJA1
Gene Alias	CX43, DFNB38, GJAL, ODDD
Gene Description	gap junction protein, alpha 1, 43kDa
Omim ID	121014 164200 186100 241550 600309
Gene Ontology	Hyperlink
Gene Summary	This gene is a member of the connexin gene family. The encoded protein is a component of gap junctions, which are composed of arrays of intercellular channels that provide a route for the diffusion of low molecular weight materials from cell to cell. The encoded protein is the major protein of gap junctions in the heart that are thought to have a crucial role in the synchronized contraction of the heart and in embryonic development. A related intronless pseudogene has been mapped to chromosome 5. Mutations in this gene have been associated with oculodentodigital dysplasia and heart malformations. [provided by RefSeq]
Other Designations	OTTHUMP00000017111 connexin 43 gap junction 43 kDa heart protein gap junction protein, alpha-like

Pathway

- [Arrhythmogenic right ventricular cardiomyopathy \(ARVC\)](#)
- [Gap junction](#)

Disease

- [Cardiovascular Diseases](#)
- [Cleft Lip](#)
- [Cleft Palate](#)
- [Diabetes Mellitus](#)
- [Edema](#)
- [Genetic Predisposition to Disease](#)

- [Hearing Loss](#)
- [Heart Defects](#)
- [Hypoplastic Left Heart Syndrome](#)
- [Presbycusis](#)
- [Schizophrenia](#)
- [Seizures](#)