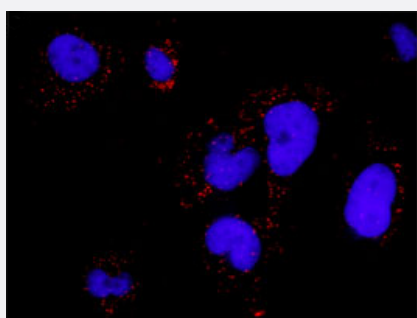


MAP3K5(phospho S1033) & MAP3K5 Protein Phosphorylation Antibody Pair

Catalog # DP0038 Size 1 Set

Applications



Representative image of Proximity Ligation Assay of protein phosphorylation. HeLa cells were stained with dual recognition antibody pair set, rabbit polyclonal antibody 1:1200 and mouse monoclonal antibody 1:50. Each red dot represents one single phosphorylated protein. The images were analyzed using an optimized freeware (BlobFinder) download from The Centre for Image Analysis at Uppsala University.

Specification

Product Description

This protein phosphorylation antibody pair set comes with two antibodies, one against the MAP3K5 protein, and the other against the specific S1033 phosphorylated site of MAP3K5 for use in [in situ Proximity Ligation Assay](#). [See Publication Reference below](#).

Reactivity

Human

Quality Control Testing

Dual recognition immunofluorescence result.
Representative image of Proximity Ligation Assay of protein phosphorylation. HeLa cells were stained with dual recognition antibody pair set, rabbit polyclonal antibody 1:1200 and mouse monoclonal antibody 1:50. Each red dot represents one single phosphorylated protein. The images were analyzed using an optimized freeware (BlobFinder) download from The Centre for Image Analysis at Uppsala University.

Supplied Product

Antibody pair set content:
1. Phospho-MAP3K5 S1033 rabbit polyclonal antibody (20 ul)
With 0.09% sodium azide.
2. MAP3K5 mouse monoclonal antibody (40 ug)
In 1x PBS, pH 7.2
*Reagents are sufficient for at least 30-50 assays using recommended protocols.

Storage Instruction

Store reagents of the antibody pair set at -20°C or lower. Please aliquot to avoid repeated freeze thaw cycle. Reagents should be returned to -20°C storage immediately after use.

Applications

- *In situ* Proximity Ligation Assay (Cell)

Gene Info — MAP3K5

Entrez GeneID	4217
Gene Name	MAP3K5
Gene Alias	ASK1, MAPKKK5, MEKK5
Gene Description	mitogen-activated protein kinase kinase kinase 5
Omim ID	602448
Gene Ontology	Hyperlink
Gene Summary	Mitogen-activated protein kinase (MAPK) signaling cascades include MAPK or extracellular signal-regulated kinase (ERK), MAPK kinase (MKK or MEK), and MAPK kinase kinase (MAPKKK or MEKK). MAPKK kinase/MEKK phosphorylates and activates its downstream protein kinase, MAPK kinase/MEK, which in turn activates MAPK. The kinases of these signaling cascades are highly conserved, and homologs exist in yeast, Drosophila, and mammalian cells. MAPKKK5 contains 1,374 amino acids with all 11 kinase subdomains. Northern blot analysis shows that MAPKKK5 transcript is abundantly expressed in human heart and pancreas. The MAPKKK5 protein phosphorylates and activates MKK4 (aliases SERK1, MAPKK4) in vitro, and activates c-Jun N-terminal kinase (JNK)/stress-activated protein kinase (SAPK) during transient expression in COS and 293 cells; MAPKKK5 does not activate MAPK/ERK. [provided by RefSeq]
Other Designations	MAP/ERK kinase kinase 5 MAPK/ERK kinase kinase 5 OTTHUMP00000017275 apoptosis signal regulating kinase

Pathway

- [Amyotrophic lateral sclerosis \(ALS\)](#)
- [MAPK signaling pathway](#)
- [Neurotrophin signaling pathway](#)

Disease

- [Asthma](#)

- [Cardiovascular Diseases](#)
- [Diabetes Mellitus](#)
- [Edema](#)
- [Genetic Predisposition to Disease](#)
- [Hypersensitivity](#)
- [Inflammation](#)
- [Insulin Resistance](#)
- [Lymphoma](#)
- [Tobacco Use Disorder](#)