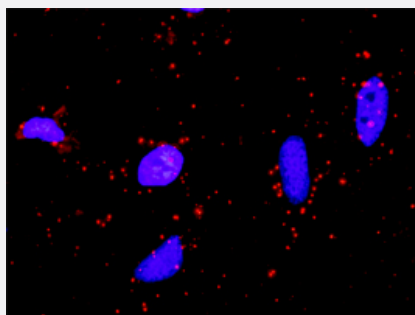


STK36 & SUFU Protein Protein Interaction Antibody Pair

Catalog # DI0592

Size 1 Set

Applications



Representative image of Proximity Ligation Assay of protein-protein interactions between STK36 and SUFU. HeLa cells were stained with anti-STK36 rabbit purified polyclonal antibody 1:1200 and anti-SUFU mouse monoclonal antibody 1:50. Each red dot represents the detection of protein-protein interaction complex. The images were analyzed using an optimized freeware (BlobFinder) download from The Centre for Image Analysis at Uppsala University.

Specification

Product Description

This protein protein interaction antibody pair set comes with two antibodies to detect the protein-protein interaction, one against the STK36 protein, and the other against the SUFU protein for use in [in situ Proximity Ligation Assay](#). [See Publication Reference below](#).

Reactivity

Human

Quality Control Testing

Protein protein interaction immunofluorescence result.
Representative image of Proximity Ligation Assay of protein-protein interactions between STK36 and SUFU. HeLa cells were stained with anti-STK36 rabbit purified polyclonal antibody 1:1200 and anti-SUFU mouse monoclonal antibody 1:50. Each red dot represents the detection of protein-protein interaction complex. The images were analyzed using an optimized freeware (BlobFinder) download from The Centre for Image Analysis at Uppsala University.

Supplied Product

Antibody pair set content:
1. STK36 rabbit purified polyclonal antibody (100 ug)
2. SUFU mouse monoclonal antibody (40 ug)
*Reagents are sufficient for at least 30-50 assays using recommended protocols.

Storage Instruction

Store reagents of the antibody pair set at -20°C or lower. Please aliquot to avoid repeated freeze-thaw cycle. Reagents should be returned to -20°C storage immediately after use.

Applications

- *In situ* Proximity Ligation Assay (Cell)

Gene Info — STK36

| | |
|--------------------|--|
| Entrez GeneID | 27148 |
| Gene Name | STK36 |
| Gene Alias | DKFZp434N0223, FU, KIAA1278 |
| Gene Description | serine/threonine kinase 36, fused homolog (Drosophila) |
| Omim ID | 607652 |
| Gene Ontology | Hyperlink |
| Gene Summary | O |
| Other Designations | fused serine/threonine kinase 36 |

Gene Info — SUFU

| | |
|--------------------|--|
| Entrez GeneID | 51684 |
| Gene Name | SUFU |
| Gene Alias | PRO1280, SUFUH, SUFUXL |
| Gene Description | suppressor of fused homolog (Drosophila) |
| Omim ID | 155255 607035 |
| Gene Ontology | Hyperlink |
| Gene Summary | SUFU encodes a component of the Sonic hedgehog (SHH; MIM 600725)/Patched (PTCH; MIM 601309) signaling pathway. Mutations in genes encoding components of this pathway are deleterious for normal development and are associated with cancer-predisposing syndromes (e.g., HPE3, MIM 142945; BCNS, MIM 109400; and GCPS, MIM 175700).[supplied by OMIM] |
| Other Designations | OTTHUMP00000020374 OTTHUMP00000059161 suppressor of fused |

Pathway

- [Basal cell carcinoma](#)

- [Basal cell carcinoma](#)
- [Hedgehog signaling pathway](#)
- [Hedgehog signaling pathway](#)
- [Pathways in cancer](#)
- [Pathways in cancer](#)

Disease

- [Alzheimer Disease](#)
- [Genetic Predisposition to Disease](#)
- [Head and Neck Neoplasms](#)
- [Kidney Failure](#)
- [Neoplasm Recurrence](#)
- [Neoplasms](#)