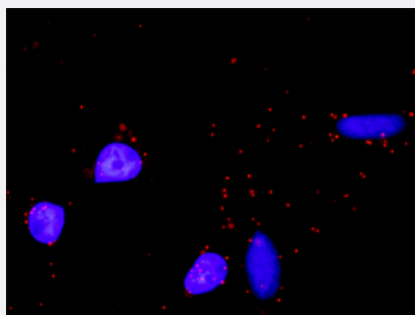


MAPK14 & MAX Protein Protein Interaction Antibody Pair

Catalog # DI0533

Size 1 Set

Applications



Representative image of Proximity Ligation Assay of protein-protein interactions between MAPK14 and MAX. HeLa cells were stained with anti-MAPK14 rabbit purified polyclonal antibody 1:1200 and anti-MAX mouse monoclonal antibody 1:50. Each red dot represents the detection of protein-protein interaction complex. The images were analyzed using an optimized freeware (BlobFinder) download from The Centre for Image Analysis at Uppsala University.

Specification

Product Description

This protein protein interaction antibody pair set comes with two antibodies to detect the protein-protein interaction, one against the MAPK14 protein, and the other against the MAX protein for use in [in situ Proximity Ligation Assay](#). [See Publication Reference below](#).

Reactivity

Human

Quality Control Testing

Protein protein interaction immunofluorescence result.
Representative image of Proximity Ligation Assay of protein-protein interactions between MAPK14 and MAX. HeLa cells were stained with anti-MAPK14 rabbit purified polyclonal antibody 1:1200 and anti-MAX mouse monoclonal antibody 1:50. Each red dot represents the detection of protein-protein interaction complex. The images were analyzed using an optimized freeware (BlobFinder) download from The Centre for Image Analysis at Uppsala University.

Supplied Product

Antibody pair set content:
1. MAPK14 rabbit purified polyclonal antibody (100 ug)
2. MAX mouse monoclonal antibody (40 ug)
*Reagents are sufficient for at least 30-50 assays using recommended protocols.

Storage Instruction

Store reagents of the antibody pair set at -20°C or lower. Please aliquot to avoid repeated freeze-thaw cycle. Reagents should be returned to -20°C storage immediately after use.

Applications

- *In situ* Proximity Ligation Assay (Cell)

Gene Info — MAPK14

Entrez GeneID	1432
Gene Name	MAPK14
Gene Alias	CSBP1, CSBP2, CSPB1, EXIP, Mxi2, PRKM14, PRKM15, RK, SAPK2A, p38, p38ALPHA
Gene Description	mitogen-activated protein kinase 14
Omim ID	600289
Gene Ontology	Hyperlink
Gene Summary	<p>The protein encoded by this gene is a member of the MAP kinase family. MAP kinases act as an integration point for multiple biochemical signals, and are involved in a wide variety of cellular processes such as proliferation, differentiation, transcription regulation and development. This kinase is activated by various environmental stresses and proinflammatory cytokines. The activation requires its phosphorylation by MAP kinase kinases (MKKs), or its autophosphorylation triggered by the interaction of MAP3K7IP1/TAB1 protein with this kinase. The substrates of this kinase include transcription regulator ATF2, MEF2C, and MAX, cell cycle regulator CDC25B, and tumor suppressor p53, which suggest the roles of this kinase in stress related transcription and cell cycle regulation, as well as in genotoxic stress response. Four alternatively spliced transcript variants of this gene encoding distinct isoforms have been reported. [provided by RefSeq]</p>
Other Designations	Csai binding protein MAP kinase Mxi2 MAX-interacting protein 2 cytokine suppressive anti-inflammatory drug binding protein p38 MAP kinase p38 mitogen activated protein kinase p38alpha Exip stress-activated protein kinase 2A

Gene Info — MAX

Entrez GeneID	4149
Gene Name	MAX
Gene Alias	MGC10775, MGC11225, MGC18164, MGC34679, MGC36767, bHLHd4, bHLHd5, bHLHd6, bHLHd7, bHLHd8, orf1
Gene Description	MYC associated factor X
Omim ID	154950
Gene Ontology	Hyperlink

Gene Summary

The protein encoded by this gene is a member of the basic helix-loop-helix leucine zipper (bHLHZ) family of transcription factors. It is able to form homodimers and heterodimers with other family members, which include Mad, Mxi1 and Myc. Myc is an oncoprotein implicated in cell proliferation , differentiation and apoptosis. The homodimers and heterodimers compete for a common DNA target site (the E box) and rearrangement among these dimer forms provides a complex system of transcriptional regulation. Multiple alternatively spliced transcript variants have been described for this gene but the full-length nature for some of them is unknown. [provided by RefSeq]

Other Designations

MAX protein|helix-loop-helix zipper protein|myc-associated factor X

Pathway

- [Amyotrophic lateral sclerosis \(ALS\)](#)
- [Epithelial cell signaling in Helicobacter pylori infection](#)
- [Fc epsilon RI signaling pathway](#)
- [GnRH signaling pathway](#)
- [Leukocyte transendothelial migration](#)
- [MAPK signaling pathway](#)
- [MAPK signaling pathway](#)
- [Neurotrophin signaling pathway](#)
- [Pathways in cancer](#)
- [Small cell lung cancer](#)
- [T cell receptor signaling pathway](#)
- [Toll-like receptor signaling pathway](#)
- [VEGF signaling pathway](#)

Disease

- [Cardiovascular Diseases](#)
- [Diabetes Mellitus](#)
- [Disease Models](#)
- [Edema](#)

- [Genetic Predisposition to Disease](#)
- [HIV Infections](#)
- [Narcolepsy](#)
- [Obesity](#)
- [Ovarian Failure](#)
- [Polycystic Ovary Syndrome](#)
- [Puberty](#)
- [Schizophrenia](#)
- [Thrombophilia](#)
- [Tobacco Use Disorder](#)