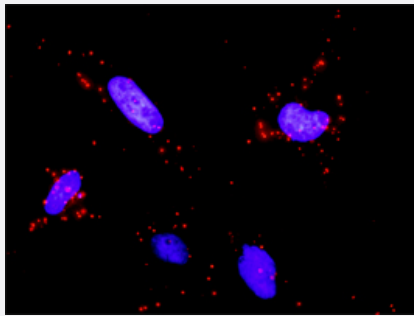


CRK & FLNA Protein Protein Interaction Antibody Pair

Catalog # DI0507

Size 1 Set

Applications



Representative image of Proximity Ligation Assay of protein-protein interactions between CRK and FLNA. HeLa cells were stained with anti-CRK rabbit purified polyclonal antibody 1:1200 and anti-FLNA mouse monoclonal antibody 1:50. Each red dot represents the detection of protein-protein interaction complex. The images were analyzed using an optimized freeware (BlobFinder) download from The Centre for Image Analysis at Uppsala University.

Specification

Product Description

This protein protein interaction antibody pair set comes with two antibodies to detect the protein-protein interaction, one against the CRK protein, and the other against the FLNA protein for use in [in situ Proximity Ligation Assay](#). [See Publication Reference below](#).

Reactivity

Human

Quality Control Testing

Protein protein interaction immunofluorescence result.
Representative image of Proximity Ligation Assay of protein-protein interactions between CRK and FLNA. HeLa cells were stained with anti-CRK rabbit purified polyclonal antibody 1:1200 and anti-FLNA mouse monoclonal antibody 1:50. Each red dot represents the detection of protein-protein interaction complex. The images were analyzed using an optimized freeware (BlobFinder) download from The Centre for Image Analysis at Uppsala University.

Supplied Product

Antibody pair set content:
1. CRK rabbit purified polyclonal antibody (100 ug)
2. FLNA mouse monoclonal antibody (40 ug)
*Reagents are sufficient for at least 30-50 assays using recommended protocols.

Storage Instruction

Store reagents of the antibody pair set at -20°C or lower. Please aliquot to avoid repeated freeze-thaw cycle. Reagents should be returned to -20°C storage immediately after use.

Applications

- *In situ* Proximity Ligation Assay (Cell)

Gene Info — CRK

Entrez GeneID	1398
Gene Name	CRK
Gene Alias	CRKII
Gene Description	v-crk sarcoma virus CT10 oncogene homolog (avian)
Omim ID	164762
Gene Ontology	Hyperlink
Gene Summary	This gene encodes a member of an adapter protein family that binds to several tyrosine-phosphorylated proteins. The product of this gene has several SH2 and SH3 domains (src-homology domains) and is involved in several signaling pathways, recruiting cytoplasmic proteins in the vicinity of tyrosine kinase through SH2-phosphotyrosine interaction. The N-terminal SH2 domain of this protein functions as a positive regulator of transformation whereas the C-terminal SH3 domain functions as a negative regulator of transformation. Two alternative transcripts encoding different isoforms with distinct biological activity have been described. [provided by RefSeq]
Other Designations	avian sarcoma virus CT10 (v-crk) oncogene homolog v-crk avian sarcoma virus CT10 oncogene homolog v-crk sarcoma virus CT10 oncogene homolog

Gene Info — FLNA

Entrez GeneID	2316
Gene Name	FLNA
Gene Alias	ABP-280, ABPX, DKFZp434P031, FLN, FLN1, FMD, MNS, NHBP, OPD, OPD1, OPD2
Gene Description	filamin A, alpha (actin binding protein 280)
Omim ID	300017 300049 300537 304120 309350 311300
Gene Ontology	Hyperlink

Gene Summary

The protein encoded by this gene is an actin-binding protein that crosslinks actin filaments and links actin filaments to membrane glycoproteins. The encoded protein is involved in remodeling the cytoskeleton to effect changes in cell shape and migration. This protein interacts with integrins, transmembrane receptor complexes, and second messengers. Defects in this gene are a cause of several syndromes, including periventricular nodular heterotopias (PVNH1, PVNH4), otopalatodigital syndromes (OPD1, OPD2), frontometaphyseal dysplasia (FMD), Melnick-Needles syndrome (MNS), and X-linked congenital idiopathic intestinal pseudoobstruction (CIIPX). Two transcript variants encoding different isoforms have been found for this gene

Other Designations

OTTHUMP00000024320|actin-binding protein 280|filamin 1|filamin A, alpha

Pathway

- [Chemokine signaling pathway](#)
- [Chronic myeloid leukemia](#)
- [ErbB signaling pathway](#)
- [Fc gamma R-mediated phagocytosis](#)
- [Focal adhesion](#)
- [Focal adhesion](#)
- [Insulin signaling pathway](#)
- [MAPK signaling pathway](#)
- [MAPK signaling pathway](#)
- [Neurotrophin signaling pathway](#)
- [Pathways in cancer](#)
- [Regulation of actin cytoskeleton](#)
- [Renal cell carcinoma](#)

Disease

- [Anorexia Nervosa](#)
- [Bulimia](#)
- [Cardiovascular Diseases](#)

- [Diabetes Mellitus](#)
- [Edema](#)
- [Genetic Predisposition to Disease](#)