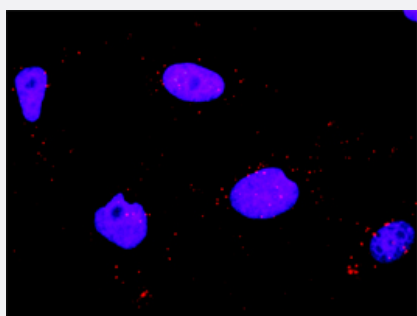


# MAPK11 & MAP3K7IP1 Protein Protein Interaction Antibody Pair

Catalog # DI0497

Size 1 Set

## Applications



Representative image of Proximity Ligation Assay of protein-protein interactions between MAPK11 and MAP3K7IP1. HeLa cells were stained with anti-MAPK11 rabbit purified polyclonal antibody 1:1200 and anti-MAP3K7IP1 mouse monoclonal antibody 1:50. Each red dot represents the detection of protein-protein interaction complex. The images were analyzed using an optimized freeware (BlobFinder) download from The Centre for Image Analysis at Uppsala University.

## Specification

### Product Description

This protein protein interaction antibody pair set comes with two antibodies to detect the protein-protein interaction, one against the MAPK11 protein, and the other against the MAP3K7IP1 protein for use in [in situ Proximity Ligation Assay](#). [See Publication Reference below](#).

### Reactivity

Human

### Quality Control Testing

Protein protein interaction immunofluorescence result.  
Representative image of Proximity Ligation Assay of protein-protein interactions between MAPK11 and MAP3K7IP1. HeLa cells were stained with anti-MAPK11 rabbit purified polyclonal antibody 1:1200 and anti-MAP3K7IP1 mouse monoclonal antibody 1:50. Each red dot represents the detection of protein-protein interaction complex. The images were analyzed using an optimized freeware (BlobFinder) download from The Centre for Image Analysis at Uppsala University.

### Supplied Product

Antibody pair set content:  
1. MAPK11 rabbit purified polyclonal antibody (100 ug)  
2. MAP3K7IP1 mouse monoclonal antibody (40 ug)  
\*Reagents are sufficient for at least 30-50 assays using recommended protocols.

### Storage Instruction

Store reagents of the antibody pair set at -20°C or lower. Please aliquot to avoid repeated freeze-thaw cycle. Reagents should be returned to -20°C storage immediately after use.

## Applications

- *In situ* Proximity Ligation Assay (Cell)

## Gene Info — MAPK11

Entrez GeneID	<a href="#">5600</a>
Gene Name	MAPK11
Gene Alias	P38B, P38BETA2, PRKM11, SAPK2, SAPK2B, p38-2, p38Beta
Gene Description	mitogen-activated protein kinase 11
Omim ID	<a href="#">602898</a>
Gene Ontology	<a href="#">Hyperlink</a>
Gene Summary	The protein encoded by this gene is a member of the MAP kinase family. MAP kinases act as an integration point for multiple biochemical signals, and are involved in a wide variety of cellular processes such as proliferation, differentiation, transcription regulation, and development. This kinase is most closely related to p38 MAP kinase, both of which can be activated by proinflammatory cytokines and environmental stress. This kinase is activated through its phosphorylation by MAP kinase kinases (MKKs), preferably by MKK6. Transcription factor ATF2/CREB2 has been shown to be a substrate of this kinase. [provided by RefSeq]
Other Designations	OTTHUMP00000196655 mitogen-activated protein kinase p38 beta mitogen-activated protein kinase p38-2 stress-activated protein kinase-2 stress-activated protein kinase-2b

## Gene Info — MAP3K7IP1

Entrez GeneID	<a href="#">10454</a>
Gene Name	MAP3K7IP1
Gene Alias	3'-Tab1, MGC57664, TAB1
Gene Description	mitogen-activated protein kinase kinase kinase 7 interacting protein 1
Omim ID	<a href="#">602615</a>
Gene Ontology	<a href="#">Hyperlink</a>

**Gene Summary**

The protein encoded by this gene was identified as a regulator of the MAP kinase kinase kinase MAP3K7/TAK1, which is known to mediate various intracellular signaling pathways, such as those induced by TGF beta, interleukin 1, and WNT-1. This protein interacts and thus activates TAK1 kinase. It has been shown that the C-terminal portion of this protein is sufficient for binding and activation of TAK1, while a portion of the N-terminus acts as a dominant-negative inhibitor of TGF beta, suggesting that this protein may function as a mediator between TGF beta receptors and TAK1. This protein can also interact with and activate the mitogen-activated protein kinase 14 (MAPK14/p38alpha), and thus represents an alternative activation pathway, in addition to the MAPKK pathways, which contributes to the biological responses of MAPK14 to various stimuli. Alternatively spliced transcript variants encoding distinct isoforms have been reported. [provided by RefSeq]

**Other Designations**

TAK1-binding protein 1|transforming growth factor beta-activated kinase-binding protein 1

## Pathway

- [Amyotrophic lateral sclerosis \(ALS\)](#)
- [Epithelial cell signaling in Helicobacter pylori infection](#)
- [Fc epsilon RI signaling pathway](#)
- [GnRH signaling pathway](#)
- [Leukocyte transendothelial migration](#)
- [MAPK signaling pathway](#)
- [MAPK signaling pathway](#)
- [Neurotrophin signaling pathway](#)
- [T cell receptor signaling pathway](#)
- [Toll-like receptor signaling pathway](#)
- [Toll-like receptor signaling pathway](#)
- [VEGF signaling pathway](#)

## Disease

- [Arthritis](#)
- [Cardiovascular Diseases](#)
- [Crohn Disease](#)

- [Diabetes Mellitus](#)
- [Edema](#)
- [HIV Infections](#)